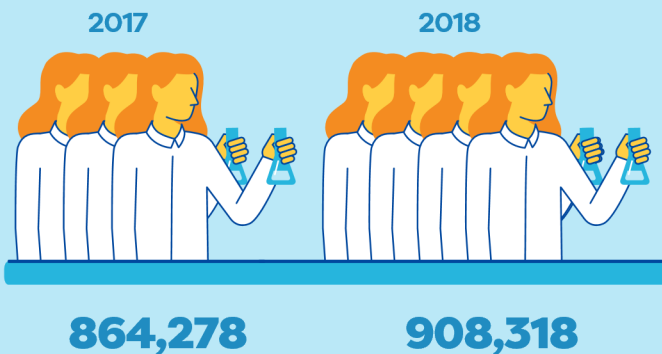
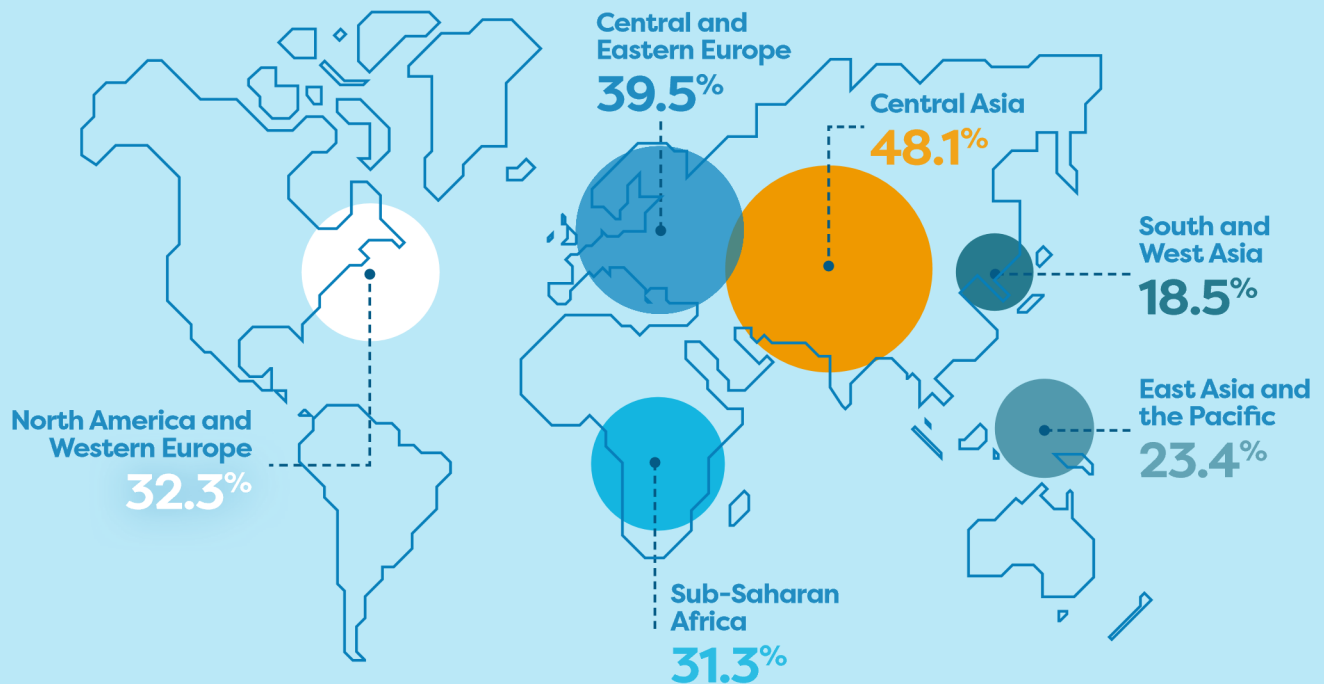


WOMEN IN STEM

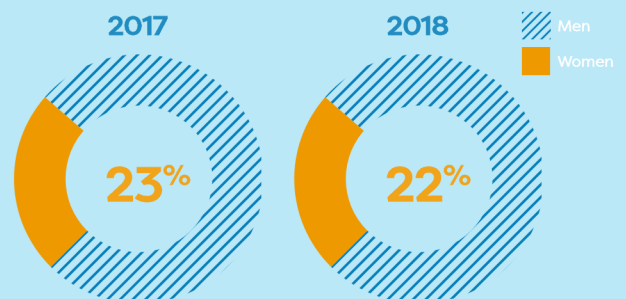
A GLOBAL PERSPECTIVE

Of all scientists employed within research and development (R&D) worldwide, only 28.8% are female (as of 2015). A breakdown of the regional averages is shown below¹:



Between 2017 and 2018, the number of female STEM (science, technology, engineering and mathematics) employees rose from 864,278 to 908,318.² The **UK** is therefore **on target** to achieve its goal of **recruiting 1 million women into STEM careers by 2020**.

Despite this increase, when viewed as a percentage the number of women making up the UK's STEM workforce has fallen. This highlights the need to keep encouraging females to pursue STEM careers.³



Women as a percentage of core STEM workforce

With leave rates for women in STEM peaking roughly 10 years into their careers, the goal is not just getting women into STEM, it's keeping them there.³

1. uis.unesco.org/sites/default/files/documents/fs51-women-in-science-2018-en.pdf

2. www.wisecampaign.org.uk/statistics/2018-workforce-statistics

3. www.catalyst.org/knowledge/women-science-technology-engineering-and-mathematics-stem