



# Safety Management in Multidisciplinary Shared Facilities with Facility Online Manager®



Shuyou Li<sup>1</sup>, Suresh V. Mallipedi<sup>2</sup>, Steven Karlman<sup>2</sup>, Tera Moskal<sup>2</sup> and Vinayak P. Dravid<sup>1,3</sup>

1. NUANCE Center, Northwestern University, Evanston, IL 60208, United States

2. Office for Research Safety, Northwestern University, Evanston, IL 60208, United States

3. Department of Materials Science and Engineering, Northwestern University, Evanston, IL 60208, United States

## The nature of shared facilities

- Open access of the laboratories
- Changing population of users
- Crossover research activities

Engineering students in a chemistry lab

Biology students in a machine shop

MSE students in a pathogenesis lab

## The challenges

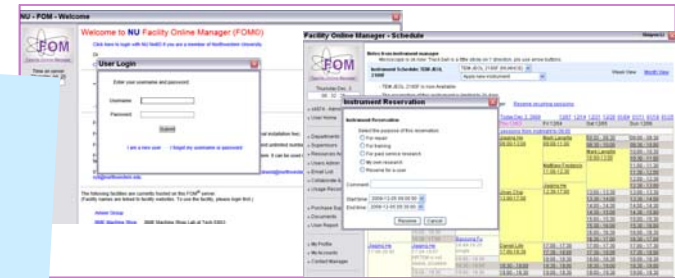
- How to efficiently control the access to the facility?
  - Authorized vs Unauthorized
  - Day time access vs any time access
  - Revoke keys automatically when student graduates or employee leaves
  - Special areas in the lab
- How to make sure every user has passed the required safety training?
  - General lab safety
  - Bloodborne pathogens
  - Radioactive materials
  - A lot more ...
- Other issues in shared facilities



## FOM Highlights

- **Highly adaptable to fit in any lab**
- **Easy user interface**
- **EVERYTHING online**
  - User application
  - Authorization
  - Equip reservation
  - Remote switch control
  - Activity reports
  - Automatic Billing
  - Collaboration tracking
  - Invoice tracking
- **Optional access control hardware**
- **University-wide single sign on**
- **Integration with university safety training database**
- **8hr user and 24 hr user control**
- **Various statistic reports for administrators**
- **Support multiple facilities with single SQL server**
- **36 laboratories at Northwestern University are using FOM**
- **67 other universities and national labs are using FOM now**
- <http://www.fom.northwestern.edu/>

## Selected user interfaces



## Current FOM users



## The scary stories

- Dec 29, 2008, UCLA
- Jan 7, 2010, Texas Tech
- Apr. 11, 2011, Yale

## The solution

- Working with the university Office for Research Safety, we successfully developed a special module in the Facility Online Manager system for the safety controls in shared facilities.

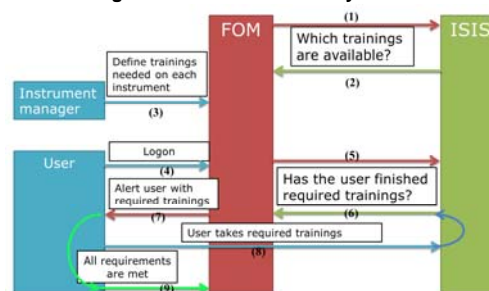
## The lab safety management with FOM system

- Integration of facility scheduling with the university-wide single-sign-on system
- Integration of instrument access with the lab entrance door controls
- Integration of instrument access with safety training records
- Lab entrance doors shut in the event of an emergency



For more information,  
Email Dr. Shuyou Li,  
[syli@northwestern.edu](mailto:syli@northwestern.edu), or  
call 847-491-6723

## Integration of FOM with ISIS system



## Summary

