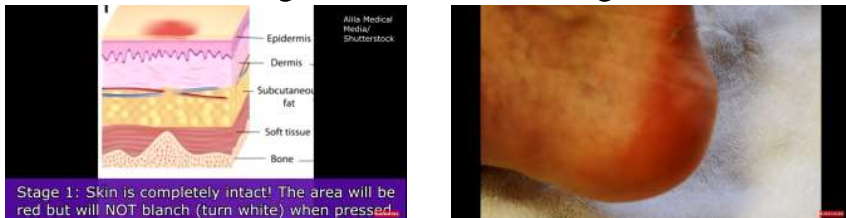


Pressure Ulcer Diagnosis "NORM"

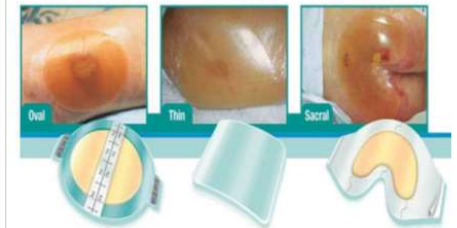
Treatment

Stage 1 = Non-Blanching

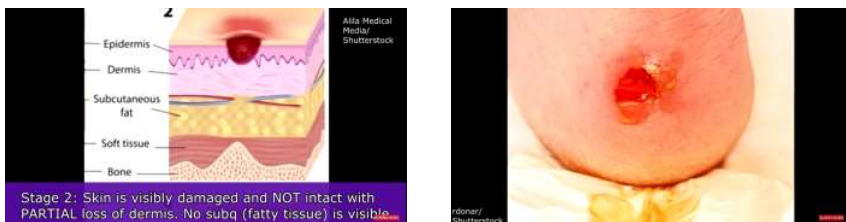


Stage 1

Clear Film Dressing

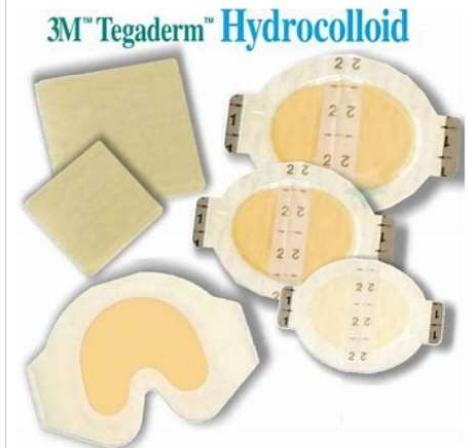


Stage 2 = Original (Classic Ucer)



Stage 2

Yellow Occlusive Dressing



Stage 3 = Rolled Crust + Adipose



Stage 3 & 4

White Absorptive Dressing + Debridement

Stage 4 = Muscle, Tendons, Bone

