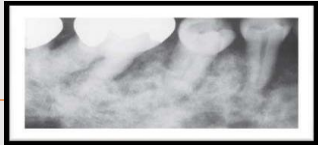


# Mixed radiolucent/radio-opaque jaw lesions (schematic radiographic approach)

## Multiple patches



Multiple skeletal bone sites

Paget disease of bone

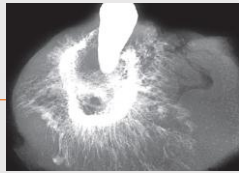
both jaws (maxilla and mandible)

Florid cemento osseous dysplasia

Single jaw (mostly mandible)

Diffuse sclerosing osteomyelitis

## Sun-ray appearance



chondrosarcoma

Osteosarcoma

## Radio-opacity surrounded by radiolucent rim



multiple

Solitary

Periapical cemental dysplasia (intermediate stage)  
Odontoma (compound)

Tooth related

Coronally related

Complex odontome

Periapically related

Periapical cemental dysplasia  
cementoblastoma

Osteoid osteoma  
Osteoblastoma  
Cemento-ossifying fibroma  
Focal cementoosseous dysplasia  
Cementoblastoma (early stage)  
Complex odontome

## Ground glass appearance



Localized  
Fibrous dysplasia

Generalized rarefaction  
hyperparathyroidism

## Radiolucency with radiopaque foci



Associated with impacted tooth

Adenomatoid odontogenic tumor  
Gorlin cyst  
Pindborg tumor

Non associated with impacted tooth

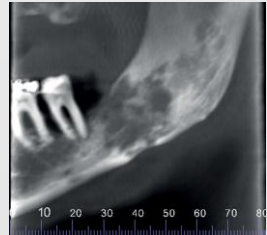
Ameloblastic fibro-odontoma  
chondroma

## Onion skin appearance



Gare's osteomyelitis

## ragged and irregular



Osteoradionecrosis

Chronic suppurative osteomyelitis

## References:

1. Oral Radiology 7th Edition Principles and Interpretation, Stuart White Michael Pharoah, 2013
2. Differential Diagnosis of Oral and Maxillofacial Lesions ,5th Edition, Norman Wood ,Paul Goaz, 1997

## prepared by:

Asmaa mohamed abo gabal- teaching assistant , MTI University  
Mohamed Osama Mostafa – teaching assistant , Beni – Suef University