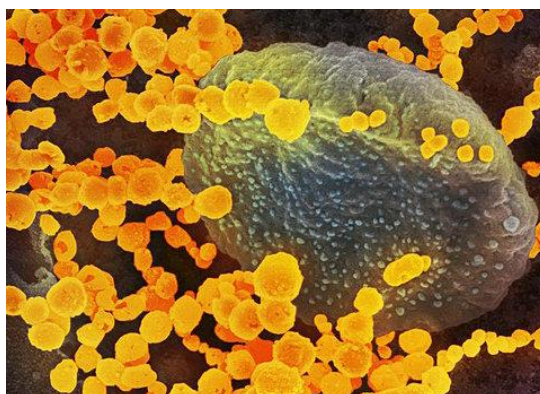
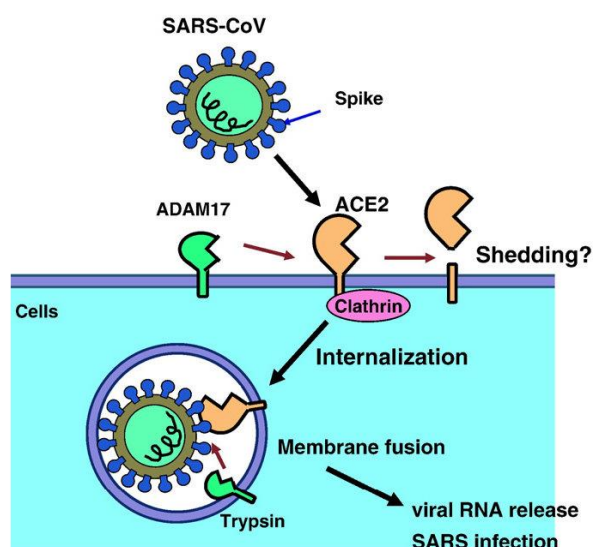


## Coronavirus Receptor Stable Cell Lines

Coronaviruses (CoVs) are a large family of viruses that cause human diseases, including severe acute respiratory syndrome coronavirus (SARS-CoV) which causes severe acute respiratory syndrome (SARS), and severe acute respiratory syndrome coronavirus 2 (SARS-CoV-2), previously known as 2019 novel coronavirus (2019-nCoV) which leads to coronavirus disease 2019 (COVID-19).



Angiotensin converting enzyme 2, also known as ACE2, is an exopeptidase that catalyzes the cleavage of angiotensin I into angiotensin 1-9, and angiotensin II into the vasodilator angiotensin 1-7. ACE2 receptor may play roles in the regulation of renal and cardiovascular function, as well as fertility. It is mainly expressed in vascular endothelial cells of the heart and the kidneys. Studies show that ACE2 receptor is the entry point into human cells for some coronaviruses, including the SARS virus and SARS-CoV-2 (previously known as 2019-nCoV).



Creative Biogene has developed ACE2 overexpressing stable cell lines that have been verified and can be used for studying and in vitro screening of potential drugs to treat diseases caused by these coronaviruses.

<https://www.creative-biogene.com/products/coronavirus-receptor-stable-cell-lines.html>