

3D Organoid Research Handbook



3D Organoid Research Handbook



Contents

P **01**

Organoid Overview

P **02**

3D Organoid Research Solutions

Growth Factors	03
Small Molecules	06
Marker Antibodies	07

P **09**

Normal Organoids

Brain Organoid	09
Breast Organoid	10
Lung Organoid	11
Cardiac Organoid	12
Blood Vessel Organoid	12
Intestinal Organoid	13
Retinal Organoid	13
Liver Organoid	14
Thyroid Organoid	15
Gastric Organoid	15
Prostate Organoid	16
Pancreas Organoid	16
Kidney Organoid	17
Inner Ear Organoid	17

P **18**

Tumor Organoids

Liver Cancer Organoid	18
Gastric Cancer Organoid	18
Bladder Cancer Organoid	18
Biliary Cancer Organoid	18
Nasopharyngeal Cancer Organoid	19
Lung Cancer Organoid	19
Breast Cancer Organoid	19
Colorectal Cancer Organoid	19
Prostate Cancer Organoid	20
Ovarian Cancer Organoid	20
Pancreatic Cancer Organoid	20

P **21**

Recommended Products

Hot-selling Growth Factors	21
Hot-selling Marker Antibodies	23

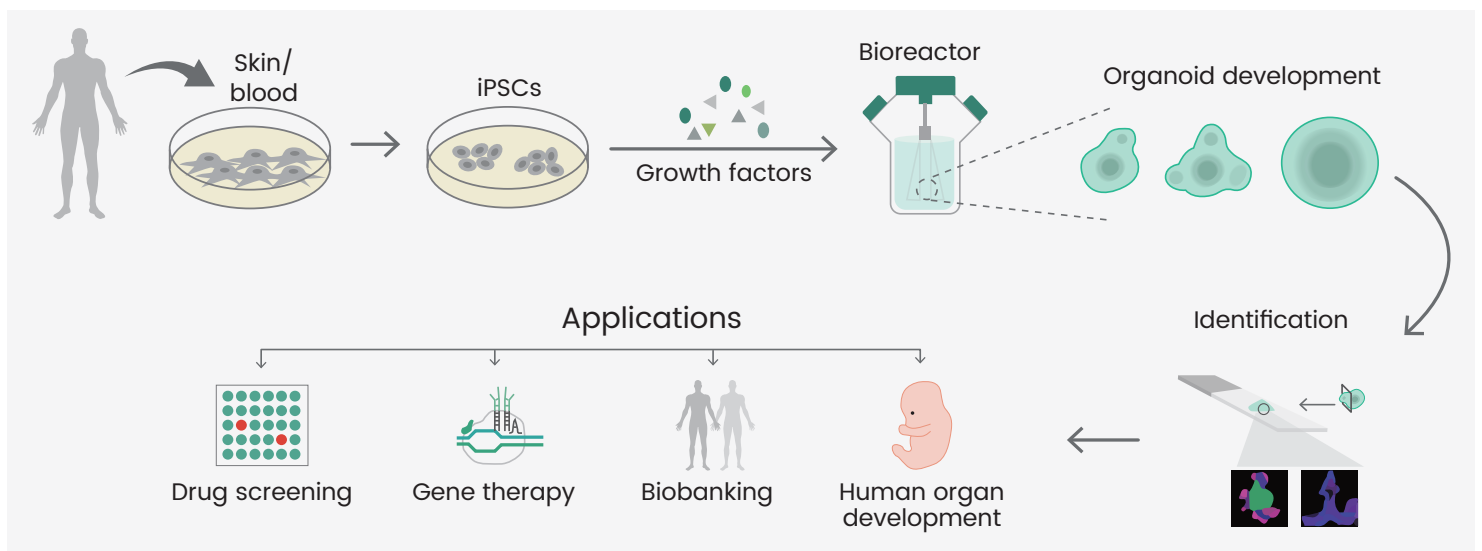
Organoid Overview

Organoid technology has rapidly advanced since Hans Clevers cultured intestinal organoids with crypt-villus structures *in vitro* in 2009. As of 2023, scientists have successfully fabricated a diverse range of normal and tumor organoids, including brain, intestinal, heart, liver, kidney, lung, breast, and retinal organoids. In recent years, organoid technology has emerged as one of the most groundbreaking and cutting-edge technologies in the biomedical field. It finds widespread applications in disease modeling, drug discovery and screening, companion diagnostics, cell therapy, regenerative medicine, and more.

Comparison between Organoids and Other Models

Characteristics	3D Organoids	2D Cell Cultures	Animal Models
Physiologic representation	Semiphysiologic	Limited	Physiologic
Success rate	High	High	Low
Time required	Moderate	Short	Long
Cost	Moderate	Low	High
Genomic stability	High	Low	High
Heterogeneity	High	Low	High
Clinical relevance	High	Low	High
Gene editing	Easy	Easy	Hard
High-throughput screening	Applicable	Applicable	Not applicable
Biobanking	Feasible	Feasible	Not feasible

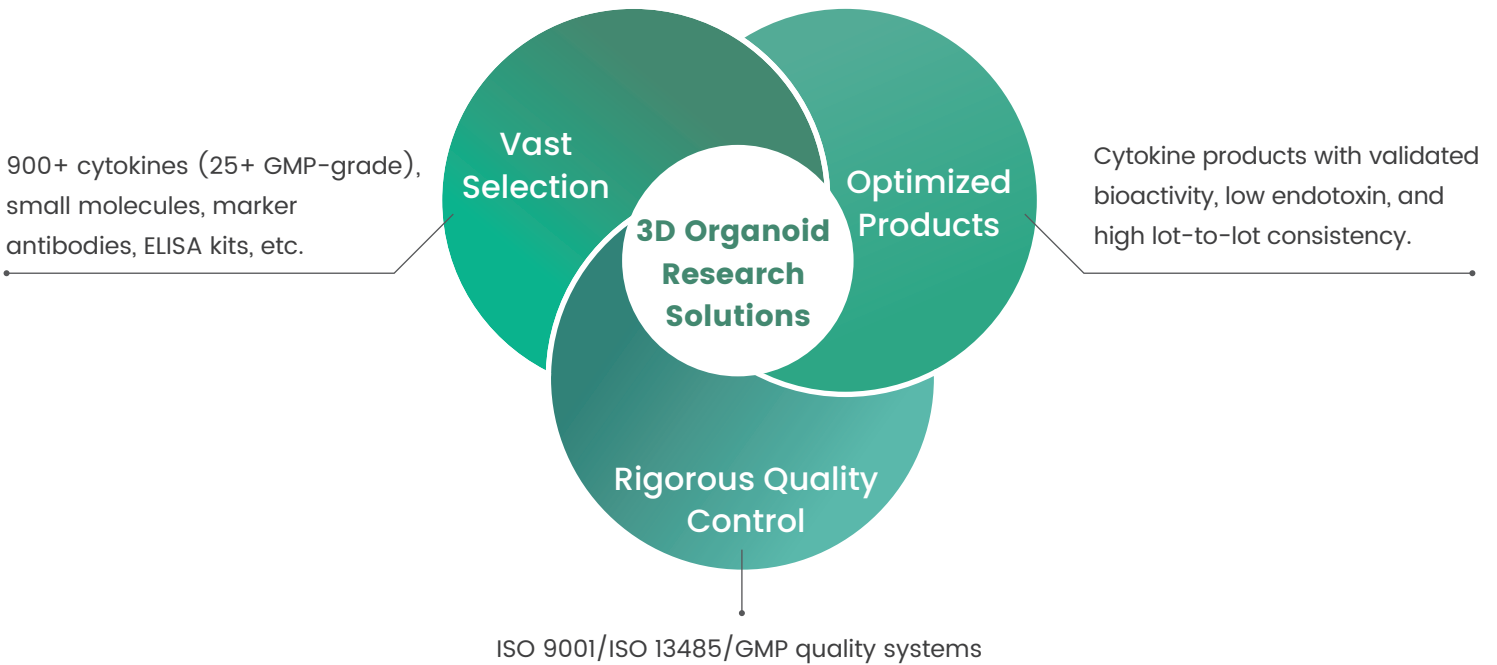
Source: DOI: 10.1056/NEJMr1806175; DOI: 10.1007/s42242-021-00150-7



Generating Human Organoids from Pluripotent Stem Cells

3D Organoid Research Solutions

As a global leader in life science reagents, Sino Biological offers an extensive range of premium products, including over 900+ cytokines, small molecules, marker antibodies, ELISA kits, and antibody pairs. These products are tailored to support customers in the crucial steps of organoid culture, differentiation, analysis, and identification.



ISO 9001:2015



ISO 13485:2016



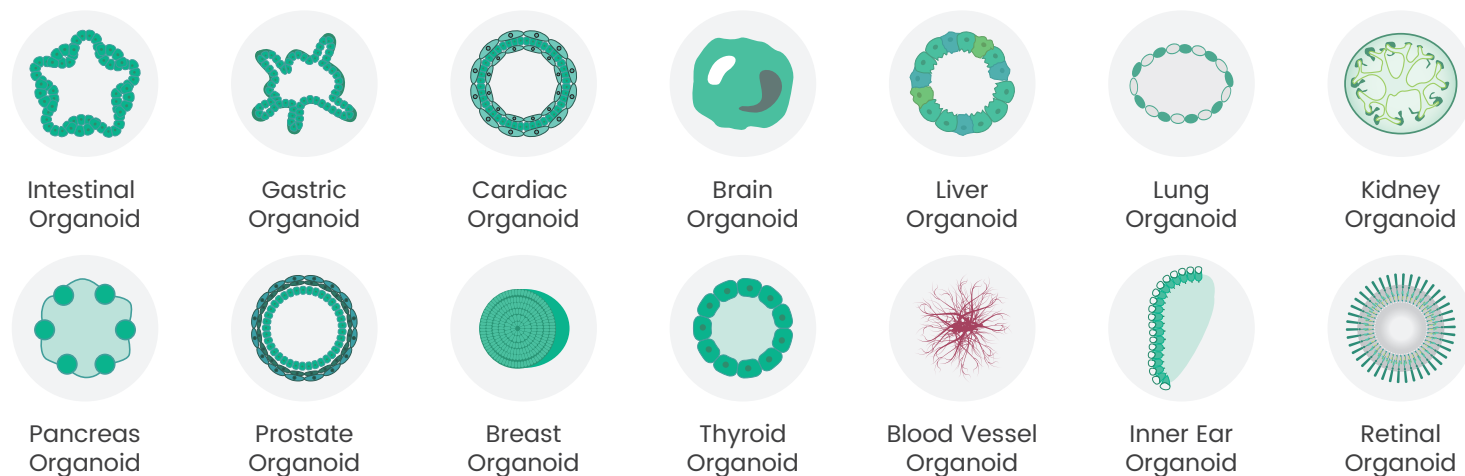
GMP



Growth Factors

Sino Biological offers a comprehensive panel of recombinant growth factors characterized by validated bioactivity, batch-to-batch consistency, and purity. These factors play a pivotal role in ensuring optimal and consistent organoid growth. Our products have gained marketwide recognition for their quality and performance, validated by numerous organoid platforms used by our clients.

Coverage of Multiple Organoid Types



Products Highlights

- ✓ High purity, bioactivity, and lot-to-lot consistency
- ✓ Low endotoxin
- ✓ Bioactivity verified by cell proliferation and cytotoxicity assays
- ✓ Expression with no tag or small tags
- ✓ RUO and GMP-grade cytokines are available
- ✓ Purity verified by SDS-PAGE/SEC-HPLC
- ✓ Covering human, mouse, rhesus, cynomolgus, rat, and canine.
- ✓ Rigorous quality control systems

Featured Products

Cytokine	Cat#	Species	Expression Host	Purity	Activity	Tag	Endotoxin
Activin A	10429-HNAH	Human, Mouse, Rat, Cynomolgus, Rhesus	HEK293 Cells	≥ 95%	Bioactive	Native	< 10 EU/mg
basic FGF/FGF2	10014-HNAE	Human	<i>E. coli</i>	≥ 95%	Bioactive	Native	< 10 EU/mg
BMP4	10609-HNAE2	Human	<i>E. coli</i>	≥ 95%	Bioactive	Native	< 1.0 EU/μg
EGF	10605-HNAE	Human	<i>E. coli</i>	≥ 95%	Bioactive	Native	< 5 EU/mg
FGF-10	10573-HNAE	Human	<i>E. coli</i>	≥ 95%	Bioactive	Native	< 5 EU/mg
IGF1	10598-HNAE	Human	<i>E. coli</i>	≥ 90%	Bioactive	Native	
KGF/FGF-7	10210-H07E	Human	<i>E. coli</i>	≥ 95%	Bioactive	N-His	< 0.1 EU/μg
Noggin/NOG	10267-HNAH	Human	HEK293 Cells	≥ 95%	Bioactive	Native	< 10 EU/mg
R-Spondin 1/ RSPO1	11083-HNAS	Human	CHO Stable Cells	≥ 95%	Bioactive	Native	< 10 EU/mg

HPLC-Verified

Product Validation Data

HPLC-verified

Validated bioactivity

Low endotoxin

High purity

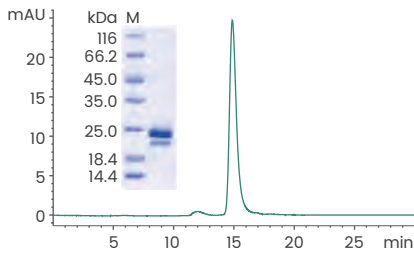
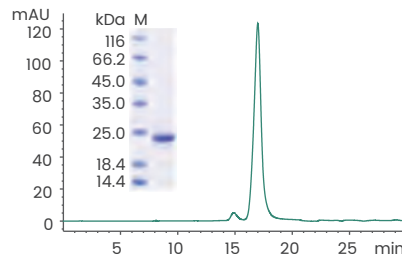
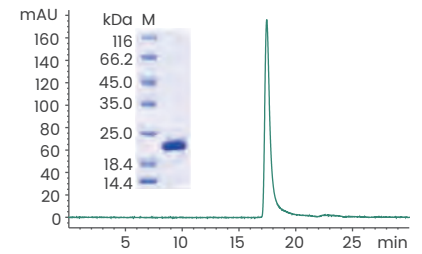
High lot-to-lot consistency

Customization options

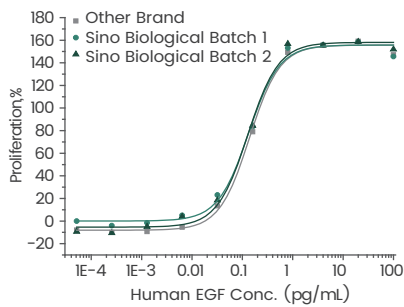
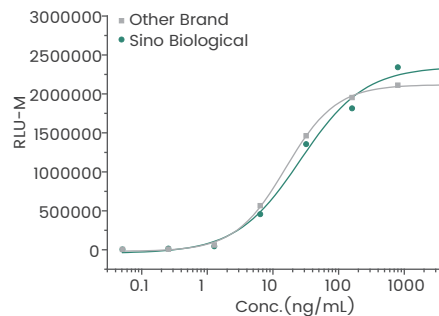
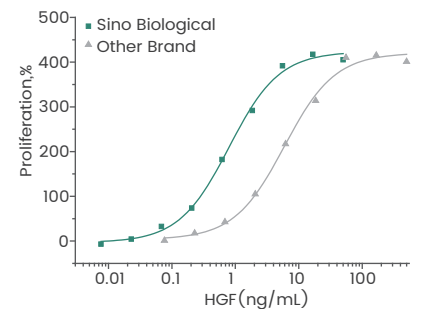
Broad coverage of species and tags

Highly cited in reputable journals

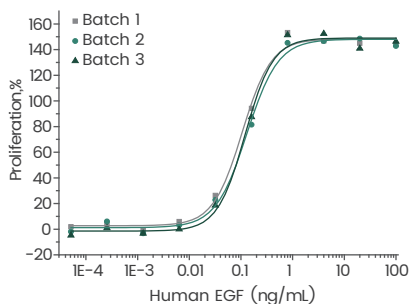
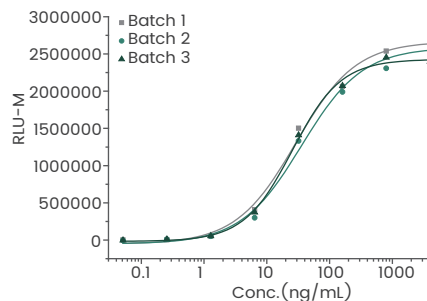
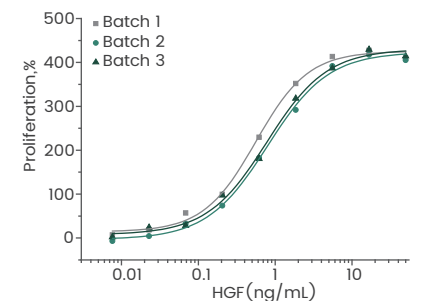
• High purity and SEC-HPLC verified

Human/Cynomolgus VEGF165
(Cat#: 11066-HNAH)≥ 95% as determined by SDS-PAGE
and SEC-HPLC.Human FG-7
(Cat#: 10210-H07E)≥ 95% as determined by SDS-PAGE and
SEC-HPLC.Human FG10
(Cat#: 10573-HNAE)≥ 95% as determined by SDS-PAGE and
SEC-HPLC.

• Industry-leading activity

Human EGF
(Cat#: 10605-HNAE)Measured in a cell proliferation assay using
Balb/C 3T3 mouse embryonic fibroblasts.Human RSPO1
(Cat#: 11083-HNAS)Measured by its ability to induce activation of
β-catenin response in a Topflash Luciferase
assay using HEK293T cells.Human HGF
(Cat#: 10463-HNAS)Measured by its ability to neutralize TGF-β
mediated inhibition on Mv-1-Lu cell
proliferation.

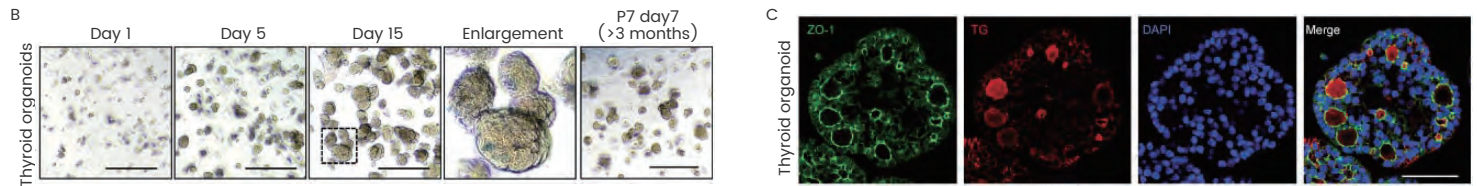
• High lot-to-lot consistency

Human EGF
(Cat#: 10605-HNAE)Three independent batches of human EGF
protein (Cat#: 10605-HNAE) have i
dentical bioactivity.Human RSPO1
(Cat#: 11083-HNAS)Three independent batches of human RSPO1
protein (Cat#: 11083-HNAS) have identical
bioactivity.Human HGF
(Cat#: 10463-HNAS)Three independent batches of human HGF
protein (Cat#: 10463-HNAS) have identical
bioactivity.

Cytokines in Organoid Culture: Excellent Performance Validated by End Users

• Human Fetal Thyroid Organoids

Human EGF (Cat#: 10605-HNAE)

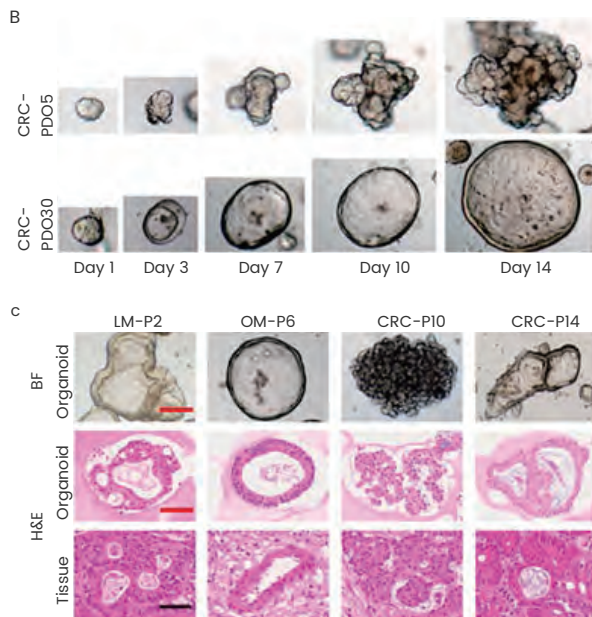


(B) Time point brightfield images of human fetal thyroid organoids. (C) Immunofluorescence double - labeled human fetal thyroid organoid.

Source: <https://doi.org/10.1002/advs.202105568>

• Colorectal Cancer Organoids

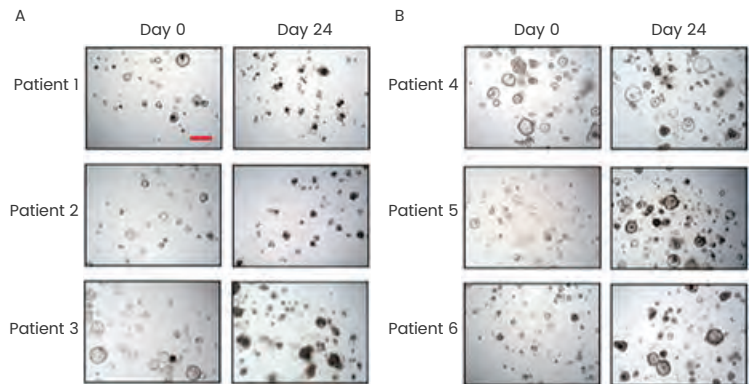
Human RSPO1 (Cat#: 11083-HNAS)



(B) Time course culture of mCRC organoids with different morphologies. (C) Histopathological features of primary tumors and Patient Derived Organoids.

Source: <https://doi.org/10.3389/fbioe.2023.1190637>

Human RSPO1, Mouse NOG, and Mouse EGF (11083-HNAS / 50688-M02H / 50482-MNCH)



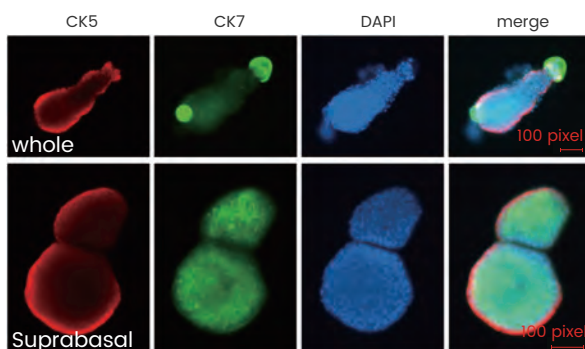
Representative bright-field images for colorectal cancer organoids on day 0 and day 24 in response to 5-Fu treatment.

A) 5-Fu sensitive organoids; (B) 5-Fu resistant organoids.

Source: <https://doi.org/10.3389/fonc.2022.855674>

• Mouse Bladder Organoids

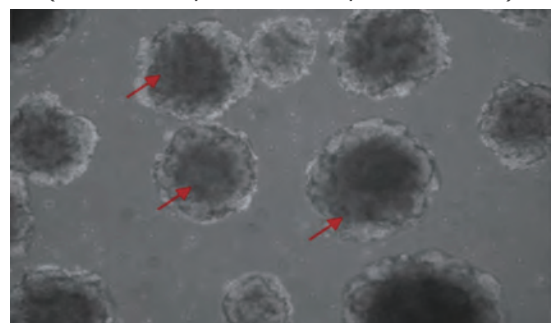
Mouse FGF-7 (Cat#: 50394-M07E)



Mouse bladder organoids after 14 days in culture. Data provided by Dr. Yin at Washington University, St. Louis, MO.

• Human Vascular Organoids

FGF2, VEGF165, and EGF (10014-HNAE/11066-HNAH/10605-HNAE)



iPSC-derived human vascular organoids were cultured with FGF2 (Cat#: 10014-HNAE), VEGF165 (Cat#: 11066-HNAH), EGF (Cat#: 10605-HNAE).

Red arrows represent vascular organoids.

Small Molecules

SignalChem (Part of Sino Biological) has developed a series of small molecules (inhibitors/activators) that can precisely regulate complex intracellular signaling pathways. These molecules are powerful tools for controlling the proliferation and differentiation of organoids. Our products undergo rigorous quality control to ensure reliability and consistency. With over 98% purity, verified by NMR testing, they are well-suited for various organoid culture applications. Let us support your research endeavors and drive innovation in medicine.

Featured Products

Product Name	CAT#	Molecular Formula	Molecular Weight	Purity	Description
A83-01	A09-900	C ₂₅ H ₁₉ N ₅ S	421.5	>98% (TLC); NMR (Conforms)	ALK inhibitor
Y-27632	R10-900B	C ₁₄ H ₂₁ N ₃ O ₂ HCl	320.3	99% (HPLC); NMR (Conforms)	ROCK inhibitor
CHIR-99021	G09-901B	C ₂₂ H ₁₈ Cl ₂ N ₈	465.3	>98% (TLC); NMR (Conforms)	GSK3 beta inhibitor
SB-202190	M39-900B	C ₂₀ H ₁₄ N ₃ OF	331.4	>98% (TLC); NMR (Conforms)	p38 MAP kinase inhibitor
LY-294002	P27-900C	C ₁₉ H ₁₇ NO ₃	307.2	>98% (TLC); NMR (Conforms)	PI3K inhibitor
LY-364947	T07-901	C ₁₇ H ₁₂ N ₄	272.31	>98% (TLC); NMR (Conforms)	ALK5 Inhibitor
PMA	P61-900D	C ₃₆ H ₅₆ O ₈	616.8	>99% (HPLC); NMR (Conforms)	PKC Activator
PD-325901	M02-901B	C ₁₆ H ₁₄ F ₃ IN ₂ O ₄	482.2	≥98% (HPLC); NMR (Conforms)	MEK Inhibitor
Dorsomorphin	P47-900	C ₂₄ H ₂₅ N ₅ O	399.5	>98% (TLC); NMR (Conforms)	AMPK inhibitor

Application of Small Molecules for Organoids

Human Colorectal Cancer Organoids

ALK inhibitor: A83-01
(Cat#: A09-900)

Antioxidative stress protection by exogenous expression of BRAFV600E in patient-derived organoids (PDOs); PDOs growth medium containing 500nM A83-01 (SignalChem, Cat#: A09-900)

Source: <https://doi.org/10.1016/j.celrep.2022.111728>

● Marker Antibodies

Verifying organoid markers is crucial to confirm the successful establishment of organoids and provides insights into cellular physiological and pathological changes. Sino Biological offers an extensive collection of high-quality organoid marker antibodies for immunohistochemistry, immunofluorescence, flow cytometry, WB, and immunoprecipitation applications, supporting organoid validation and research.

Products Highlights



High specificity, sensitivity,
and lot-to-lot consistency



Suitable for WB, ELISA, IHC, FACS,
and IF applications



Rigorous compliance with
ISO9001/ISO13485/GMP standards



In-house production




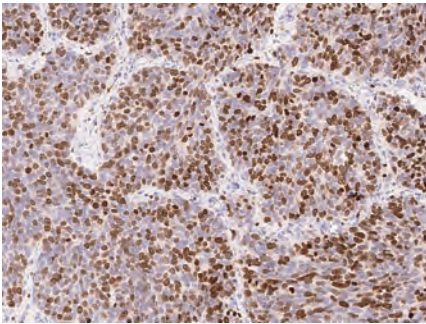
Customization options are
available



Utilized to characterize dozens of
normal and tumor organoids

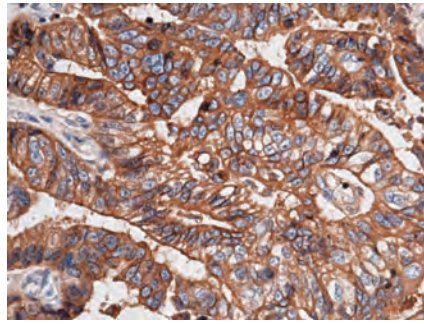
Product Validation Data

Ki67 Antibody 
(Cat#: 100130-MM19)



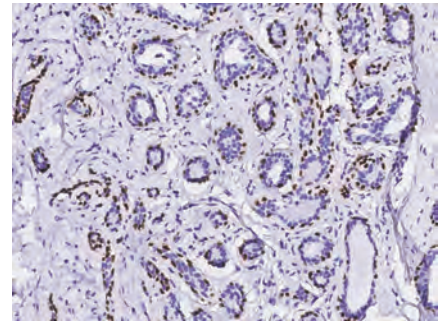
Immunohistochemical staining of human Ki67 in human lung cancer.

E-cadherin Antibody
(Cat#: 10204-R032)



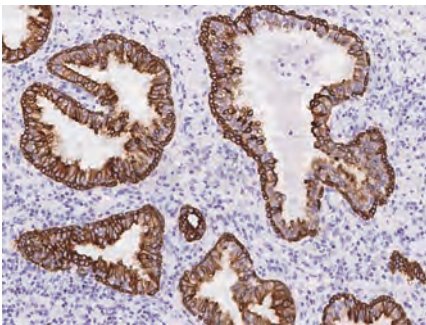
Immunohistochemical staining of human E-cadherin in human gastric cancer.

p63 Antibody 
(Cat#: 100266-R143)



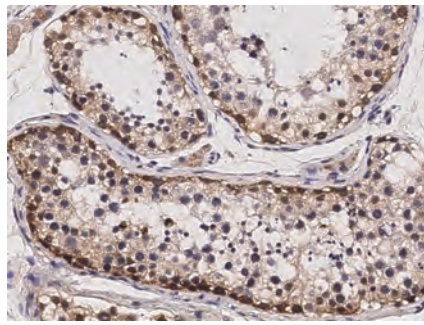
Immunohistochemical staining of human p63 in human breast carcinoma.

Cytokeratin 8 Antibody
(Cat#: 108772-MM05)



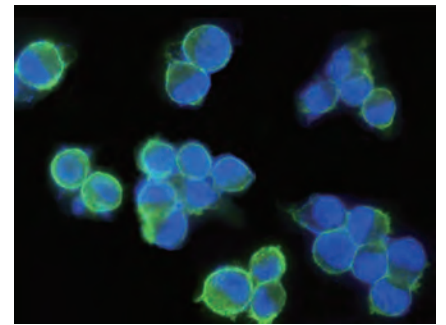
Immunohistochemical staining of human Cytokeratin 8 in human prostate.

SOX-2 Antibody
(Cat#: 100106-R017)



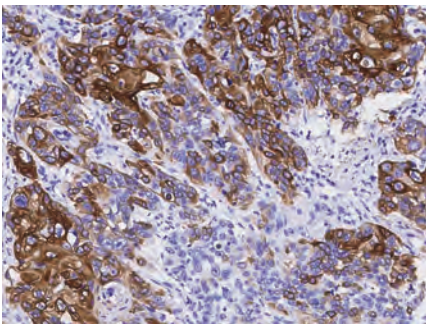
Immunohistochemical staining of human SOX2 in human testis.

EpCAM Antibody
(Cat#: 10694-R028)




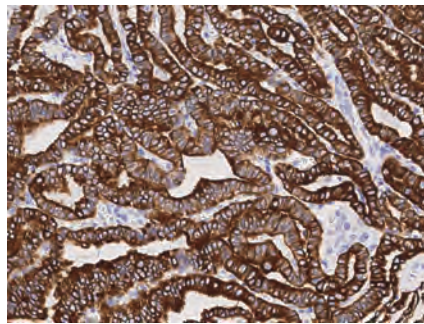
Immunofluorescence staining of Human EpCAM in SKBR3 cells.

KRT14 Antibody
(Cat#: 100129-R101)



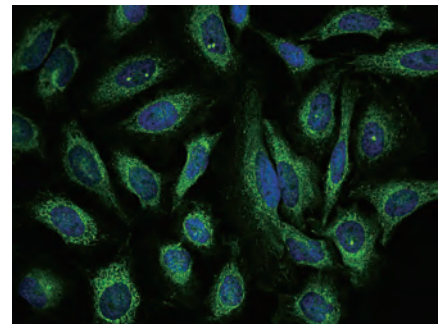
Immunohistochemical staining of human CK14 in human esophageal carcinoma.

KRT19 Antibody 
(Cat#: 100306-MM08)



Immunohistochemical staining of human KRT19 in human thyroid cancer.

KRT20 Antibody
(Cat#: 202163-T42)



Immunofluorescence staining of KRT20 in HeLa cells.

 IHC pathology antibodies

Normal Organoids

Brain Organoid

Cytokines	Protein	Cat#	Species	Tag	Endotoxin
	EGF	10605-HNAE	Human	Native	<5 EU/mg
	FGF2	10014-HNAE	Human	Native	<10 EU/mg
	FGF19	12226-HNAE	Human	Native	<10 EU/mg
	NOG	10267-HNAH	Human	Native	<10 EU/mg
	TGFB1	10804-HNAC	Human, Rhesus, Cynomolgus, Canine	Native	<1 EU/μg
	INS	11038-HNAY	Human	Native	
	Shh	10372-H08HI	Human	C-His	<1 EU/μg
	BDNF	50240-M08H	Mouse	C-His	<1 EU/μg
	GDNF	10561-HNAE	Human	Native	<10 EU/mg
	FGF8	16277-HNAE	Human	Native	
	DKK1	10170-H08H	Human	C-His	<1 EU/μg
	BMP4	10609-HNAE2	Human	Native	<1 EU/μg
	CNTF	11841-H07E	Human	N-His	
FGF4	16043-HNAE	Human	Native	<10 EU/mg	
CXCL12	13511-HNCE	Human	Native	<1 EU/μg	

Marker Antibodies	Target	Cat#	Species	Ab Type	Application
	TUBB3	101288-T34	Human	Rabbit PAb	WB, ICC/IF
	SOX2	100106-R017	Human	Rabbit MAb	IHC-P
	Ki67	100130-MM19	Human	Mouse MAb	IHC-P
	PAX2	101696-T46	Human	Rabbit PAb	WB, IHC-P, ICC/IF, IP
	EMX1	205715-T40	Human	Rabbit PAb	WB, IHC-P
	Neuropilin-2	10695-MM01	Human	Mouse MAb	ELISA, ELISA (Det)
	Transthyretin	201630-T10	Human	Rabbit PAb	IHC-P, ICC/IF
	MAP2	100568-T08	Human	Rabbit PAb	IHC-P
	N Cadherin	11039-R020	Human	Rabbit MAb	WB, ELISA, FCM, ICC/IF
	CALB2	203658-T08	Human	Rabbit PAb	IHC-P
DCX	13498-MM01T	Human	Mouse MAb	ICC/IF	

Small Molecules	Product Name	Cat#	Molecular Formula	Molecular Weight	Purity	Description
	CHIR-99021	G09-901B	C ₂₂ H ₁₈ C ₁₂ N ₈	465.3	>98% (TLC); NMR (Conforms)	GSK3 beta inhibitor
	Y-27632	R10-900B	C ₁₄ H ₂₁ N ₃ O ₂ HCl	320.3	99% (HPLC); NMR (Conforms)	ROCK inhibitor

HPLC-Verified

Sino Biological, Inc.

Breast Organoid

Cytokines	Protein	Cat#	Species	Tag	Endotoxin
	EGF	10605-HNAE	Human	Native	< 5 EU/mg
	RSPO1	11083-HNAS	Human	Native	<10 EU/mg
	RSPO2	13084-H02HI	Human	C-hFc	<1 EU/μg
	NOG	10267-HNAH	Human	Native	<10 EU/mg
	FGF10	10573-HNAE	Human	Native	< 5 EU/mg
	FGF2	10014-HNAE	Human	Native	<10 EU/mg
	FGF7	10210-H07E	Human	N-His	<10 EU/mg
	IGF1	10598-HNAY1	Human	Native	
	NRG1	11609-HNAE	Human	N-cleavage	<10 EU/mg

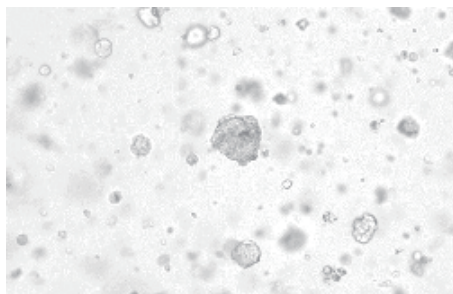
Marker Antibodies	Target	Cat#	Species	Ab Type	Application
	KRT18	102193-T44	Human	Rabbit PAb	WB, IHC-P, IP
	KRT14	100129-R101	Human	Rabbit MAb	WB, IHC-P, IP
	p63	100266-R143	Human	Rabbit MAb	IHC-P
	Cytokeratin 8	108772-MM05	Human	Mouse MAb	IHC-P, ICC/IF
	EpCAM	10694-R028	Human	Rabbit MAb	WB, ELISA, ELISA (Det), IHC-P, FCM, ICC/IF, IP
	E-cadherin	10204-R032	Human	Rabbit MAb	IHC-P, ICC/IF
	Actin	101273-T40	Human	Rabbit PAb	WB, IHC-P

Small Molecules	Product Name	Cat#	Molecular Formula	Molecular Weight	Purity	Description
	A83-01	A09-900	C ₂₅ H ₁₉ N ₅ S	421.5	>98% (TLC); NMR (Conforms)	ALK inhibitor
	SB-202190	M39-900B	C ₂₀ H ₁₄ N ₃ OF	331.4	>98% (TLC); NMR (Conforms)	p38 MAP kinase inhibitor
	Y-27632	R10-900B	C ₁₄ H ₂₁ N ₃ O ₂ HCl	320.3	99% (HPLC); NMR (Conforms)	ROCK inhibitor

HPLC-Verified

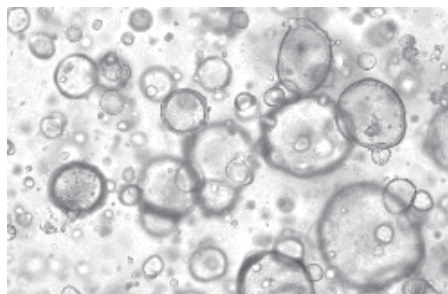
Organoid Culture Images (Courtesy of DIMed)

Human Breast Cancer Organoid



Cytokine Recommended
 FGF7 (10210-H07E), IGF1 (10598-HNAE),
 RSPO1 (11083-HNAS), NOG (50688-M02H),
 NRG1 Beta 1 (11609-H01H),
 EGF (50482-M01H/50482-MNCH)

Human Breast Organoid



Cytokine Recommended
 IGF1 (10598-HNAE),
 NRG1 Beta 1 (11609-H01H)

Lung Organoid

	Protein	Cat#	Species	Tag	Endotoxin
Cytokines	EGF	10605-HNAE	Human	Native	<5 EU/mg
	NOG	10267-HNAH	Human	Native	<10 EU/mg
	RSPO1	11083-HNAS	Human	Native	<10 EU/mg
	FGF2	10014-HNAE	Human	Native	<10 EU/mg
	FGF7	10210-H07E	Human	N-His	<10 EU/mg
	FGF10	10573-HNAE	Human	Native	<5 EU/mg
	Activin A	10429-HNAH	Human, Mouse, Rat, Cynomolgus, Rhesus	Native	<10 EU/mg
	BMP4	10609-HNAE2	Human	Native	<1 EU/μg

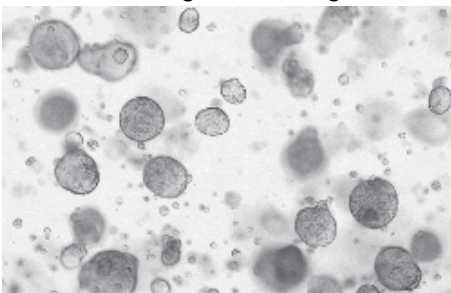
	Target	Cat#	Species	Ab Type	Application
Marker Antibodies	TJPI	102305-T02	Human	Rabbit PAb	ICC/IF
	Uteroglobin	50291-R122	Mouse	Rabbit MAb	IHC-P
	E-cadherin	10204-R032	Human	Rabbit MAb	IHC-P, ICC/IF
	FoxJ1	101152-T36	Human	Rabbit PAb	WB, IP
	p63	100266-R143	Human	Rabbit MAb	IHC-P
	SOX2	100106-R017	Human	Rabbit MAb	IHC-P
	Cytokeratin 8	108772-MM05	Human	Mouse MAb	IHC-P, ICC/IF
	Cytokeratin 17	201453-T10	Human	Rabbit PAb	IHC-P, ICC/IF

	Product Name	Cat#	Molecular Formula	Molecular Weight	Purity	Description
Small Molecules	A83-01	A09-900	C ₂₅ H ₁₉ N ₅ S	421.5	>98% (TLC); NMR (Conforms)	ALK inhibitor
	CHIR-99021	G09-901B	C ₂₂ H ₁₈ Cl ₂ N ₈	465.3	>98% (TLC); NMR (Conforms)	GSK3 beta inhibitor
	Y-27632	R10-900B	C ₁₄ H ₂₁ N ₃ O ₂ HCl	320.3	99% (HPLC); NMR (Conforms)	ROCK inhibitor

HPLC-Verified

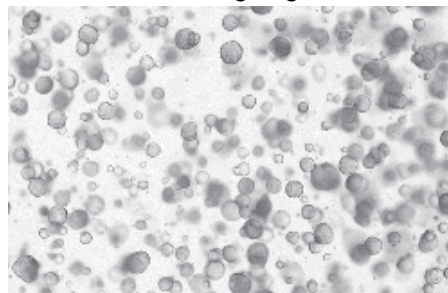
Organoid Culture Images (Courtesy of DIMed)

Human Lung Cancer Organoid



Cytokine Recommended
 FGF2 (10014-HNAE), FGF7 (10210-H07E),
 FGF10 (10573-HNAE), RSPO1 (11083-HNAS),
 FGF4 (16043-HNAE), NOG (50688-M02H),
 EGF (50482-M01H/50482-MNCH)

Human Lung Organoid



Cytokine Recommended
 FGF2 (10014-HNAE), FGF7 (10210-H07E),
 FGF10 (10573-HNAE), RSPO1 (11083-HNAS),
 FGF4 (16043-HNAE), NOG (50688-M02H),
 EGF (50482-M01H/50482-MNCH)

● Cardiac Organoid

	Protein	Cat#	Species	Tag	Endotoxin
Cytokines	FGF2	10014-HNAE	Human	Native	<10 EU/mg
	FGF4	16043-HNAE ✔	Human	Native	<10 EU/mg
	FGF10	10573-HNAE ✔	Human	Native	<5 EU/mg
	BMP4	10609-HNAE2	Human	Native	<1 EU/μg
	LIF	14890-HNAH ✔	Human	Native	<10 EU/mg
	Activin A	10429-HNAH ✔	Human, Mouse, Rat, Cynomolgus, Rhesus	Native	<10 EU/mg

	Target	Cat#	Species	Ab Type	Application
Marker Antibodies	IRX4	110984-T02	Human	Rabbit PAb	ICC/IF
	Ki67	100130-MM19	Human	Mouse MAb	IHC-P
	N Cadherin	11039-R020	Human	Rabbit MAb	WB, ELISA, FCM, ICC/IF
	beta-Catenin	11279-R021	Human	Rabbit MAb	ELISA, IHC-P, FCM, ICC/IF
	CD31	10148-MM13	Human	Mouse MAb	FCM, ICC/IF
	Alpha-fetoprotein	12177-MM27	Human	Mouse MAb	ICC/IF
	VE-Cadherin	10433-MM01	Human	Mouse MAb	FCM, ICC/IF
	Troponin I	100758-T08	Human	Rabbit PAb	IHC-P

	Product Name	Cat#	Molecular Formula	Molecular Weight	Purity	Description
Small Molecules	CHIR-99021	G09-901B	C ₂₂ H ₁₈ Cl ₂ N ₈	465.3	>98% (TLC); NMR (Conforms)	GSK3 beta inhibitor
	LY-294002	P27-900C	C ₁₉ H ₁₇ NO ₃	307.2	>98% (TLC); NMR (Conforms)	PI3K inhibitor
	Y-27632	R10-900B	C ₁₄ H ₂₁ N ₃ O ₂ HCl	320.3	99% (HPLC); NMR (Conforms)	ROCK inhibitor

● Blood Vessel Organoid






	Protein	Cat#	Species	Tag	Endotoxin
Cytokines	FGF2	10014-HNAE	Human	Native	<10 EU/mg
	VEGFA	11066-HNAH ✔	Human, Cynomolgus	Native	<10 EU/mg
	EGF	10605-HNAE ✔	Human	Native	<5 EU/mg
	BMP4	10609-HNAE2	Human	Native	<1 EU/μg

	Target	Cat#	Species	Ab Type	Application
Marker Antibodies	CD31	10148-MM13	Human	Mouse MAb	FCM, ICC/IF
	PDGFRB	90215-T24	Rhesus	Rabbit PAb	ELISA, IHC-P
	ACTA2	100125-T40	Human	Rabbit PAb	WB, IHC-P
	Actin	101273-T40	Human	Rabbit PAb	WB, IHC-P
	Ki67	100130-MM19	Human	Mouse MAb	IHC-P
	VE-Cadherin	10433-MM01	Human	Mouse MAb	FCM, ICC/IF

	Product Name	Cat#	Molecular Formula	Molecular Weight	Purity	Description
Small Molecules	CHIR-99021	G09-901B	C ₂₂ H ₁₈ Cl ₂ N ₈	465.3	>98% (TLC); NMR (Conforms)	GSK3 beta inhibitor
	Y-27632	R10-900B	C ₁₄ H ₂₁ N ₃ O ₂ HCl	320.3	99% (HPLC); NMR (Conforms)	ROCK inhibitor

✔ HPLC-Verified

● Intestinal Organoid

Cytokines	Protein	Cat#	Species	Tag	Endotoxin
	EGF	10605-HNAE 	Human	Native	< 5 EU/mg
	NOG	10267-HNAH 	Human	Native	< 10 EU/mg
	RSPO1	11083-HNAS 	Human	Native	< 10 EU/mg
	FGF2	10014-HNAE	Human	Native	< 10 EU/mg
	FGF4	16043-HNAE 	Human	Native	< 10 EU/mg
	Activin A	10429-HNAH 	Human, Mouse, Rat, Cynomolgus, Rhesus	Native	< 10 EU/mg
	BMP4	10609-HNAE2	Human	Native	< 1 EU/ μ g
	IGF1	10598-HNAY1	Human	Native	
	IL22	13059-HNAE	Human	Native	

Marker Antibodies	Target	Cat#	Species	Ab Type	Application
	Albumin	68001-R101	Human	Rabbit MAb	WB, ELISA, FCM, ICC/IF, IP
	PDX1	204167-T46	Human	Rabbit PAb	WB, IHC-P, ICC/IF, IP
	LGR5	100687-T04	Human	Rabbit PAb	IP
	CD34	10103-MMI7	Human	Mouse MAb	IHC-P
	c-Kit	11996-R351	Human	Rabbit MAb	ELISA, IHC-P
	EpCAM	10694-R028	Human	Rabbit MAb	WB, ELISA, ELISA (Det), IHC-P, FCM, ICC/IF, IP
	E-cadherin	10204-R032	Human	Rabbit MAb	IHC-P, ICC/IF
	Chromogranin A	100256-MM02	Human	Mouse MAb	IHC-P
	KRT20	202163-T42	Human	Rabbit PAb	WB, IHC-P, ICC/IF
SOX2	100106-R017	Human	Rabbit MAb	IHC-P	

Small Molecules	Product Name	Cat#	Molecular Formula	Molecular Weight	Purity	Description
	A83-01	A09-900	C ₂₅ H ₁₉ N ₅ S	421.5	>98% (TLC); NMR (Conforms)	ALK inhibitor
	CHIR-99021	G09-901B	C ₂₂ H ₁₈ Cl ₂ N ₈	465.3	>98% (TLC); NMR (Conforms)	GSK3 beta inhibitor
	SB-202190	M39-900B	C ₂₀ H ₁₄ N ₃ OF	331.4	>98% (TLC); NMR (Conforms)	p38 MAP kinase inhibitor
	Y-27632	R10-900B	C ₁₄ H ₂₁ N ₃ O ₂ HCl	320.3	99% (HPLC); NMR (Conforms)	ROCK inhibitor

● Retinal Organoid

Cytokines	Protein	Cat#	Species	Tag	Endotoxin
	Shh	10372-H08HI	Human	C-His	< 1 EU/ μ g

Marker Antibodies	Target	Cat#	Species	Ab Type	Application
	ISL1	200388-T34	Human	Rabbit PAb	WB, ICC/IF
	Ki67	100130-MMI9	Human	Mouse MAb	IHC-P
	SOX2	100106-R017	Human	Rabbit MAb	IHC-P
	Nestin	103270-MM11	Human	Mouse MAb	WB, IHC-P, FCM, IP
	GFAP	206278-T44	Human	Rabbit PAb	WB, IHC-P, IP
	Vimentin	100254-R001	Human	Rabbit MAb	WB, IHC-P

Small Molecules	Product Name	Cat#	Molecular Formula	Molecular Weight	Purity	Description
	Y-27632	R10-900B	C ₁₄ H ₂₁ N ₃ O ₂ HCl	320.3	99% (HPLC); NMR (Conforms)	ROCK inhibitor

Liver Organoid

Cytokines	Protein	Cat#	Species	Tag	Endotoxin
	EGF	10605-HNAE	Human	Native	< 5 EU/mg
	NOG	10267-HNAH	Human	Native	< 10 EU/mg
	RSPO1	11083-HNAS	Human	Native	< 10 EU/mg
	FGF2	10014-HNAE	Human	Native	< 10 EU/mg
	FGF10	10573-HNAE	Human	Native	< 5 EU/mg
	Activin A	10429-HNAH	Human, Mouse, Rat, Cynomolgus, Rhesus	Native	< 10 EU/mg
	FGF4	16043-HNAE	Human	Native	< 10 EU/mg
	BMP4	10609-HNAE2	Human	Native	< 1 EU/μg
	HGF	10463-HNAS	Human	Native	< 10 EU/mg
	TGFA	11252-HNAE	Human	Native	
	INS	11038-HNAY	Human	Native	
	BMP-2	10426-HNAE1	Human, Mouse, Rat, Rhesus, Canine	Native	< 10 EU/mg
	DKK1	10170-H08H	Human	C-His	< 1 EU/μg
	TGFB1	10804-HNAC	Human, Rhesus, Cynomolgus, Canine	Native	< 1 EU/μg
	OSM	10452-HNAH	Human	Native	< 10 EU/mg
	FGF7	10210-H07E	Human	N-His	< 10 EU/mg
FGF19	12226-HNAE	Human	Native	< 10 EU/mg	

Marker Antibodies	Target	Cat#	Species	Ab Type	Application
	KRT19	100306-MM08	Human	Mouse MAb	IHC-P
	HNF4A	201893-T42	Human	Rabbit PAb	WB, IHC-P, ICC/IF
	Albumin	68001-R101	Human	Rabbit MAb	WB, ELISA, FCM, ICC/IF, IP
	EpCAM	10694-R028	Human	Rabbit MAb	WB, ELISA, ELISA (Det), IHC-P, FCM, ICC/IF, IP
	TJPI	102305-T02	Human	Rabbit PAb	ICC/IF
	E-cadherin	10204-R032	Human	Rabbit MAb	IHC-P, ICC/IF
	PCK1	204407-T44	Human	Rabbit PAb	WB, IHC-P, IP
	ABCC2	203123-T08	Human	Rabbit PAb	IHC-P

Small Molecules	Product Name	Cat#	Molecular Formula	Molecular Weight	Purity	Description
	A83-01	A09-900	C ₂₅ H ₁₉ N ₅ S	421.5	>98% (TLC); NMR (Conforms)	ALK inhibitor
	CHIR-99021	G09-901B	C ₂₂ H ₁₈ Cl ₂ N ₈	465.3	>98% (TLC); NMR (Conforms)	GSK3 beta inhibitor
	Y-27632	R10-900B	C ₁₄ H ₂₁ N ₃ O ₂ HCl	320.3	99% (HPLC); NMR (Conforms)	ROCK inhibitor

HPLC-Verified

● Thyroid Organoid

Cytokines	Protein	Cat#	Species	Tag	Endotoxin
	EGF	10605-HNAE	Human	Native	< 5 EU/mg
	NOG	10267-HNAH	Human	Native	< 10 EU/mg
	RSPO1	11083-HNAS	Human	Native	< 10 EU/mg
	FGF10	10573-HNAE	Human	Native	< 5 EU/mg
	FGF4	16043-HNAE	Human	Native	< 10 EU/mg
	BMP4	10609-HNAE2	Human	Native	< 1 EU/μg

Marker Antibodies	Target	Cat#	Species	Ab Type	Application
	PAX8	101554-T10	Human	Rabbit PAb	IHC-P, ICC/IF
	Thyroid peroxidase	13194-MM17	Human	Mouse MAb	ELISA (Cap), IHC-P
	SLC5A5	202914-T08	Human	Rabbit PAb	IHC-P
	TJPI	102305-T02	Human	Rabbit PAb	ICC/IF

Small Molecules	Product Name	Cat#	Molecular Formula	Molecular Weight	Purity	Description
	A83-01	A09-900	C ₂₅ H ₁₉ N ₅ S	421.5	>98% (TLC); NMR (Conforms)	ALK inhibitor
	CHIR-99021	G09-901B	C ₂₂ H ₁₈ Cl ₂ N ₈	465.3	>98% (TLC); NMR (Conforms)	GSK3 beta inhibitor
	LY-364947	T07-901	C ₁₇ H ₁₂ N ₄	272.31	>98% (TLC); NMR (Conforms)	ALK5 Inhibitor
	Y-27632	R10-900B	C ₁₄ H ₂₁ N ₃ O ₂ HCl	320.3	99% (HPLC); NMR (Conforms)	ROCK inhibitor

● Gastric Organoid

Cytokines	Protein	Cat#	Species	Tag	Endotoxin
	EGF	10605-HNAE	Human	Native	< 5 EU/mg
	NOG	10267-HNAH	Human	Native	< 10 EU/mg
	RSPO1	11083-HNAS	Human	Native	< 10 EU/mg
	FGF10	10573-HNAE	Human	Native	< 5 EU/mg
	FGF4	16043-HNAE	Human	Native	< 10 EU/mg
	Activin A	10429-HNAH	Human, Mouse, Rat, Cynomolgus, Rhesus	Native	< 10 EU/mg

Marker Antibodies	Target	Cat#	Species	Ab Type	Application
	FOXF1	101131-T08	Human	Rabbit PAb	IHC-P
	KLF5	101389-T02	Human	Rabbit PAb	ICC/IF
	PDX1	100419-T36	Human	Rabbit PAb	WB, IP
	E-cadherin	10204-R032	Human	Rabbit MAb	IHC-P, ICC/IF
	ACTA2	100125-T40	Human	Rabbit PAb	WB, IHC-P
	PGC	12072-MM07	Human	Mouse MAb	ELISA, IHC-P

Small Molecules	Product Name	Cat#	Molecular Formula	Molecular Weight	Purity	Description
	A83-01	A09-900	C ₂₅ H ₁₉ N ₅ S	421.5	>98% (TLC); NMR (Conforms)	ALK inhibitor
	CHIR-99021	G09-901B	C ₂₂ H ₁₈ Cl ₂ N ₈	465.3	>98% (TLC); NMR (Conforms)	GSK3 beta inhibitor
	Y-27632	R10-900B	C ₁₄ H ₂₁ N ₃ O ₂ HCl	320.3	99% (HPLC); NMR (Conforms)	ROCK inhibitor
	SB-202190	M39-900B	C ₂₀ H ₁₄ N ₃ OF	331.4	>98% (TLC); NMR (Conforms)	p38 MAP kinase inhibitor
	PD-325901	M02-901B	C ₁₆ H ₁₄ F ₃ IN ₂ O ₄	482.2	≥98% (HPLC); NMR (Conforms)	MEK Inhibitor
	PMA	P61-900D	C ₃₆ H ₅₆ O ₈	616.8	>99% (HPLC); NMR (Conforms)	PKC Activator

HPLC-Verified

● Sino Biological, Inc.

● Prostate Organoid

Cytokines	Protein	Cat#	Species	Tag	Endotoxin
	EGF	10605-HNAE	Human	Native	< 5 EU/mg
	NOG	10267-HNAH	Human	Native	< 10 EU/mg
	RSPO1	11083-HNAS	Human	Native	< 10 EU/mg
	Activin A	10429-HNAH	Human, Mouse, Rat, Cynomolgus, Rhesus	Native	< 10 EU/mg
	FGF10	10573-HNAE	Human	Native	< 5 EU/mg
	FGF2	10014-HNAE	Human	Native	< 10 EU/mg

Marker Antibodies	Target	Cat#	Species	Ab Type	Application
	KRT5	100312-R176	Human	Rabbit MAb	WB, ICC/IF
	Cytokeratin 8	108772-MM05	Human	Mouse MAb	IHC-P, ICC/IF
	p63	100266-R143	Human	Rabbit MAb	IHC-P
	PSA	10771-MM03	Human	Mouse MAb	IHC-P
	Androgen receptor	207175-T08	Human	Rabbit PAb	IHC-P
	KRT14	100129-R101	Human	Rabbit MAb	WB, IHC-P, IP
	E-cadherin	10204-R032	Human	Rabbit MAb	IHC-P, ICC/IF
	Vimentin	100254-R001	Human	Rabbit MAb	WB, IHC-P
	Nkx3.1	100573-T08	Human	Rabbit PAb	IHC-P
	KRT18	102193-T44	Human	Rabbit PAb	WB, IHC-P, IP
Chromogranin A	100256-MM02	Human	Mouse MAb	IHC-P	

Small Molecules	Product Name	Cat#	Molecular Formula	Molecular Weight	Purity	Description
	A83-01	A09-900	C ₂₅ H ₁₉ N ₅ S	421.5	>98% (TLC); NMR (Conforms)	ALK inhibitor
	Y-27632	R10-900B	C ₁₄ H ₂₁ N ₃ O ₂ HCl	320.3	99% (HPLC); NMR (Conforms)	ROCK inhibitor
	SB-202190	M39-900B	C ₂₀ H ₁₄ N ₃ OF	331.4	>98% (TLC); NMR (Conforms)	p38 MAP kinase inhibitor

● Pancreas Organoid





Cytokines	Protein	Cat#	Species	Tag	Endotoxin
	EGF	10605-HNAE	Human	Native	< 5 EU/mg
	NOG	10267-HNAH	Human	Native	< 10 EU/mg
	RSPO1	11083-HNAS	Human	Native	< 10 EU/mg
	FGF10	10573-HNAE	Human	Native	< 5 EU/mg
	FGF2	10014-HNAE	Human	Native	< 10 EU/mg

Marker Antibodies	Target	Cat#	Species	Ab Type	Application
	KLF4	100418-T36	Human	Rabbit PAb	WB, IP
	PDX1	204167-T46	Human	Rabbit PAb	WB, IHC-P, ICC/IF, IP
	ONECUT1	104590-T10	Human	Rabbit PAb	IHC-P, ICC/IF
KRT19	100306-MM08	Human	Mouse MAb	IHC-P	

Small Molecules	Product Name	Cat#	Molecular Formula	Molecular Weight	Purity	Description
	A83-01	A09-900	C ₂₅ H ₁₉ N ₅ S	421.5	>98% (TLC); NMR (Conforms)	ALK inhibitor
	CHIR-99021	G09-901B	C ₂₂ H ₁₈ Cl ₂ N ₈	465.3	>98% (TLC); NMR (Conforms)	GSK3 beta inhibitor
	Y-27632	R10-900B	C ₁₄ H ₂₁ N ₃ O ₂ HCl	320.3	99% (HPLC); NMR (Conforms)	ROCK inhibitor

HPLC-Verified



Kidney Organoid

	Protein	Cat#	Species	Tag	Endotoxin
Cytokines	BMP-2	10426-HNAE1	Human, Mouse, Rat, Rhesus, Canine	Native	<10 EU/mg
	BMP4	10609-HNAE2	Human	Native	<1 EU/ μ g
	FGF2	10014-HNAE	Human	Native	<10 EU/mg
	FGF4	16043-HNAE 	Human	Native	<10 EU/mg
	FGF7	10210-H07E 	Human	N-His	<10 EU/mg
	FGF9	10262-HNAE 	Human	Native	<10 EU/mg
	HGF	10463-HNAS 	Human	Native	<10 EU/mg

	Target	Cat#	Species	Ab Type	Application
Marker Antibodies	PAX2	101696-T46	Human	Rabbit PAb	WB, IHC-P, ICC/IF, IP
	PODXL	100588-T08	Human	Rabbit PAb	IHC-P
	N Cadherin	11039-R020	Human	Rabbit MAb	WB, ELISA, FCM, ICC/IF
	E-cadherin	10204-R032	Human	Rabbit MAb	IHC-P, ICC/IF
	Vimentin	100254-R001	Human	Rabbit MAb	WB, IHC-P
	CD31	10148-MM13	Human	Mouse MAb	FCM, ICC/IF
	PAX8	101554-T10	Human	Rabbit PAb	IHC-P, ICC/IF

	Product Name	Cat#	Molecular Formula	Molecular Weight	Purity	Description
Small Molecules	Dorsomorphin	P47-900	C ₂₄ H ₂₅ N ₅ O	399.5	>98% (TLC); NMR (Conforms)	AMPK inhibitor
	CHIR-99021	G09-901B	C ₂₂ H ₁₈ Cl ₂ N ₈	465.3	>98% (TLC); NMR (Conforms)	GSK3 beta inhibitor
	Y-27632	R10-900B	C ₁₄ H ₂₁ N ₃ O ₂ HCl	320.3	99% (HPLC); NMR (Conforms)	ROCK inhibitor

Inner Ear Organoid

	Protein	Cat#	Species	Tag	Endotoxin
Cytokines	EGF	10605-HNAE 	Human	Native	<5 EU/mg
	IGF1	10598-HNAY1	Human	Native	
	PDGFBB	10572-HNAE 	Human	Native	<50 EU/mg
	NGF	11050-HNAC	Human	Native	<1 EU/ μ g
	BMP4	10609-HNAE2	Human	Native	<1 EU/ μ g
	FGF2	10014-HNAE	Human	Native	<10 EU/mg

	Target	Cat#	Species	Ab Type	Application
Marker Antibodies	PAX8	101554-T10	Human	Rabbit PAb	IHC-P, ICC/IF
	E-cadherin	10204-R032	Human	Rabbit MAb	IHC-P, ICC/IF
	SOX2	100106-R017	Human	Rabbit MAb	IHC-P
	TUBB3	101288-T34	Human	Rabbit PAb	WB, ICC/IF
	KRT18	102193-T44	Human	Rabbit PAb	WB, IHC-P, IP
	PCP4	207078-T10	Human	Rabbit PAb	IHC-P, ICC/IF
	ANXA4	203531-T44	Human	Rabbit PAb	WB, IHC-P, IP
SPARCL1	10046-MM06	Human	Mouse MAb	ELISA, FCM, ICC/IF	


	Product Name	Cat#	Molecular Formula	Molecular Weight	Purity	Description
Small Molecules	A83-01	A09-900	C ₂₅ H ₁₉ N ₅ S	421.5	>98% (TLC); NMR (Conforms)	ALK inhibitor
	CHIR-99021	G09-901B	C ₂₂ H ₁₈ Cl ₂ N ₈	465.3	>98% (TLC); NMR (Conforms)	GSK3 beta inhibitor
	Y-27632	R10-900B	C ₁₄ H ₂₁ N ₃ O ₂ HCl	320.3	99% (HPLC); NMR (Conforms)	ROCK inhibitor

 HPLC-Verified



 Sino Biological, Inc.

Tumor Organoids




Liver Cancer Organoid

Target	Cat#	Species	Ab Type	Application
EpCAM	10694-R028	Human	Rabbit MAb	WB, ELISA, ELISA (Det), IHC-P, FCM, ICC/IF, IP
Alpha-fetoprotein	12177-MM27	Human	Mouse MAb	ICC/IF
GPC3	100393-T02	Human	Rabbit PAb	ICC/IF
beta-Catenin	11279-R021	Human	Rabbit MAb	ELISA, IHC-P, FCM, ICC/IF
Ki67	100130-MM19 	Human	Mouse MAb	IHC-P
KRT19	100306-MM08	Human	Mouse MAb	IHC-P


Gastric Cancer Organoid

Target	Cat#	Species	Ab Type	Application
CEACAM1	10822-R103	Human	Rabbit MAb	FCM, ICC/IF
KRT7	100310-MM02	Human	Mouse MAb	IHC-P
KRT20	202163-T42	Human	Rabbit PAb	WB, IHC-P, ICC/IF
Ki67	100130-MM19 	Human	Mouse MAb	IHC-P
E-cadherin	10204-R032	Human	Rabbit MAb	IHC-P, ICC/IF
p53	90001-R002 	Cynomolgus	Rabbit MAb	IHC-P, ICC/IF

Bladder Cancer Organoid


Target	Cat#	Species	Ab Type	Application
KRT7	100310-MM02	Human	Mouse MAb	IHC-P
KRT20	202163-T42	Human	Rabbit PAb	WB, IHC-P, ICC/IF
Ki67	100130-MM19 	Human	Mouse MAb	IHC-P
KRT5	100312-R176	Human	Rabbit MAb	WB, ICC/IF
Cytokeratin 8	108772-MM05	Human	Mouse MAb	IHC-P, ICC/IF
p53	90001-R002 	Cynomolgus	Rabbit MAb	IHC-P, ICC/IF
KRT14	100129-R101	Human	Rabbit MAb	WB, IHC-P, IP
FOXA1	200169-T46	Human	Rabbit PAb	WB, IHC-P, ICC/IF, IP
p63	100266-R143 	Human	Rabbit MAb	IHC-P
CD44	12211-T62	Human	Rabbit PAb	WB, ELISA, IHC-P, ICC/IF, IP

Biliary Cancer Organoid


Target	Cat#	Species	Ab Type	Application
KRT7	100310-MM02	Human	Mouse MAb	IHC-P
MUC1	12123-MM05	Human	Mouse MAb	ELISA, IHC-P
p53	90001-R002 	Cynomolgus	Rabbit MAb	IHC-P, ICC/IF
KRT19	100306-MM08	Human	Mouse MAb	IHC-P
EpCAM	10694-R028	Human	Rabbit MAb	WB, ELISA, ELISA (Det), IHC-P, FCM, ICC/IF, IP
SI00P	12635-R116	Human	Rabbit MAb	IHC-P, ICC/IF
N-Cadherin	11039-R020	Human	Rabbit MAb	WB, ELISA, FCM, ICC/IF
NCAM	10673-R131	Human	Rabbit MAb	ELISA, ICC/IF

 IHC pathology antibodies



● Nasopharyngeal Cancer Organoid

Target	Cat#	Species	Ab Type	Application
Ki67	100130-MM19 	Human	Mouse MAb	IHC-P
CD133	108990-T08	Mouse	Rabbit PAb	IHC-P
CD44	12211-T62	Human	Rabbit PAb	WB, ELISA, IHC-P, ICC/IF, IP



● Lung Cancer Organoid

Target	Cat#	Species	Ab Type	Application
AHR	101180-T10	Human	Rabbit PAb	IHC-P, ICC/IF
Napsin A	102221-T08	Human	Rabbit PAb	IHC-P
KRT7	100310-MM02	Human	Mouse MAb	IHC-P
p63	100266-R143 	Human	Rabbit MAb	IHC-P
NCAM	10673-R131	Human	Rabbit MAb	ELISA, ICC/IF
Synaptophysin	100298-R249	Human	Rabbit MAb	IHC-P

● Breast Cancer Organoid




Target	Cat#	Species	Ab Type	Application
ER alpha	100386-T10	Human	Rabbit PAb	IHC-P, ICC/IF
PR	100362-T08	Human	Rabbit PAb	IHC-P
Her2	10004-R002A	Human	Rabbit MAb	ELISA, IHC-P, FCM, ICC/IF
Ki67	100130-MM19 	Human	Mouse MAb	IHC-P
KRT14	100129-R101	Human	Rabbit MAb	WB, IHC-P, IP
p63	100266-R143 	Human	Rabbit MAb	IHC-P
KRT5	100312-R176	Human	Rabbit MAb	WB, ICC/IF
Cytokeratin 8	108772-MM05	Human	Mouse MAb	IHC-P, ICC/IF
P-cadherin	107913-T08	Mouse	Rabbit PAb	IHC-P
E-cadherin	10204-R032	Human	Rabbit MAb	IHC-P, ICC/IF
KRT18	102193-T44	Human	Rabbit PAb	WB, IHC-P, IP

● Colorectal Cancer Organoid



Target	Cat#	Species	Ab Type	Application
MSH6	100973-R035 	Human	Rabbit MAb	IHC-P, ICC/IF
Ki67	100130-MM19 	Human	Mouse MAb	IHC-P
CDX2	101172-T32	Human	Rabbit PAb	WB
KRT20	202163-T42	Human	Rabbit PAb	WB, IHC-P, ICC/IF
beta-Catenin	11279-R021	Human	Rabbit MAb	ELISA, IHC-P, FCM, ICC/IF
P-CK	100675-T36	Human	Rabbit PAb	WB, IP
OLFM4	11639-MM12	Human	Mouse MAb	ELISA, FCM

 IHC pathology antibodies


● Prostate Cancer Organoid

Target	Cat#	Species	Ab Type	Application
Ki67	100130-MM19 	Human	Mouse MAb	IHC-P
PTEN	100729-T08	Human	Rabbit PAb	IHC-P
AR	100272-MM05	Human	Mouse MAb	ICC/IF
Nkx3.1	100573-T08	Human	Rabbit PAb	IHC-P
p63	100266-R143 	Human	Rabbit MAb	IHC-P
PSA	10771-MM03	Human	Mouse MAb	IHC-P
GSTP1	100926-T38	Human	Rabbit PAb	WB, ICC/IF, IP
ACTA2	100125-T40	Human	Rabbit PAb	WB, IHC-P
KRT5	100312-R176	Human	Rabbit MAb	WB, ICC/IF
Cytokeratin 8	108772-MM05	Human	Mouse MAb	IHC-P, ICC/IF
E-cadherin	10204-R032	Human	Rabbit MAb	IHC-P, ICC/IF
Vimentin	100254-R001 	Human	Rabbit MAb	WB, IHC-P
KRT14	100129-R101	Human	Rabbit MAb	WB, IHC-P, IP

● Ovarian Cancer Organoid

Target	Cat#	Species	Ab Type	Application
p53	90001-R002 	Cynomolgus	Rabbit MAb	IHC-P, ICC/IF
PAX8	101554-T10	Human	Rabbit PAb	IHC-P, ICC/IF
Cytokeratin 8	108772-MM05	Human	Mouse MAb	IHC-P, ICC/IF
ER alpha	100386-T10	Human	Rabbit PAb	IHC-P, ICC/IF
HE4	12609-RP02	Human	Rabbit PAb	ELISA, IHC-P
PR	100362-T08	Human	Rabbit PAb	IHC-P
KRT7	100310-MM02	Human	Mouse MAb	IHC-P
E-cadherin	10204-R032	Human	Rabbit MAb	IHC-P, ICC/IF
Her2	10004-R002A	Human	Rabbit MAb	ELISA, IHC-P, FCM, ICC/IF
KRT20	202163-T42	Human	Rabbit PAb	WB, IHC-P, ICC/IF
Ki67	100130-MM19 	Human	Mouse MAb	IHC-P
CD9	11029-MM01	Human	Mouse MAb	FCM, ICC/IF
KRT19	100306-MM08	Human	Mouse MAb	IHC-P
EpCAM	10694-R028	Human	Rabbit MAb	WB, ELISA, ELISA (Det), IHC-P, FCM, ICC/IF, IP
ALDH1A1	11388-MM03	Human	Mouse MAb	WB, ELISA, FCM, ICC/IF
CD44	12211-MM02	Human	Mouse MAb	FCM, ICC/IF

● Pancreatic Cancer Organoid

Target	Cat#	Species	Ab Type	Application
Synaptophysin	100298-R249	Human	Rabbit MAb	IHC-P
Ki67	100130-MM19 	Human	Mouse MAb	IHC-P
Chromogranin A	100256-MM02	Human	Mouse MAb	IHC-P
KRT19	100306-MM08	Human	Mouse MAb	IHC-P
MUC1	12123-MM05	Human	Mouse MAb	ELISA, IHC-P

 IHC pathology antibodies

Recommended Products

Hot-selling Growth Factors

Cytokines	Cat#	Species	Expression Host	Organoid Type
BMP2	10426-HNAE	Human, Mouse, Rat, Rhesus, Canine	<i>E. coli</i>	Liver, kidney
CNTF	80012-RNAE	Rat	<i>E. coli</i>	Brain
CXCL12	10118-H01H	Human	HEK293 Cells	Brain
	50025-MNAE	Mouse	<i>E. coli</i>	
	13511-HNCE	Human	<i>E. coli</i>	
	10118-HNAE	Human	<i>E. coli</i>	
	13511-H07E	Human	<i>E. coli</i>	
DKK1	57248-M08H	Mouse	HEK293 Cells	Brain, liver
EGF	10605-H01H	Human	HEK293 Cells	Intestine, stomach, brain, liver, lung, pancreas, prostate, breast, inner ear, blood vessel, thyroid
	50482-MNAY	Mouse	Yeast	
	50482-M01H	Mouse	HEK293 Cells	
	50482-MNCH	Mouse	HEK293 Cells	
FGF2	50037-M07E	Mouse	<i>E. coli</i>	Intestine, heart, brain, liver, lung, kidney, pancreas, prostate, breast, inner ear, blood vessel
FGF7	50394-M07E	Mouse	<i>E. coli</i>	Liver, lung, kidney, breast
FGF8	16124-HNAE	Human	<i>E. coli</i>	Brain
	16277-HNAE	Human	<i>E. coli</i>	
FGF9	10262-H01H	Human	HEK293 Cells	Kidney
GDNF	10561-HNCH	Human	HEK293 Cells	Brain
HGF	50038-MNAH	Mouse	HEK293 Cells	Liver, kidney
	80429-RNAH	Rat	HEK293 Cells	
IGF1	10598-HNAE	Human	<i>E. coli</i>	Intestine, breast, inner ear
	50437-MNAY	Mouse	Yeast	
IL22	13059-HNAE	Human	<i>E. coli</i>	Intestine
INS	11038-HNAY	Human	Yeast	Brain, liver
LIF	50756-MNAH	Mouse	HEK293 Cells	Heart
	14890-H08H	Human	HEK293 Cells	
NGF	50385-MNAC	Mouse	CHO Stable Cells	Inner ear
NOG	50688-M02H	Mouse	HEK293 Cells	Intestine, stomach, brain, liver, lung, pancreas, prostate, breast, thyroid
	10267-H02H	Human	HEK293 Cells	
	10267-H08H	Human	HEK293 Cells	

Cytokines	Cat#	Species	Expression Host	Organoid Type
NRG1	10658-H01H	Human	HEK293 Cells	Breast
	11609-HNCH	Human	HEK293 Cells	
	10658-H08H	Human	HEK293 Cells	
	11609-H01H2	Human	HEK293 Cells	
OSM	10452-H08H	Human	HEK293 Cells	Liver
	50112-M08H	Mouse	HEK293 Cells	
PDGF	10572-H07Y	Human	Yeast	Inner ear
	13081-H07Y	Human	Yeast	
	10273-H01H	Human	HEK293 Cells	
RSPO1	11083-H08H	Human	HEK293 Cells	Intestine, stomach, liver, Lung, pancreas, prostate, breast, thyroid
	50316-M08S	Mouse	CHO Stable Cells	
	11083-H08H1	Human	HEK293 Cells	
RSPO2	51078-M05H	Mouse	HEK293 Cells	Breast
RTN4R	10466-H08H	Human	HEK293 Cells	Breast
Shh	10372-H08H1	Human	HEK293 Cells	Brain, retina
TGFA	11252-HNAE	Human	<i>E. coli</i>	Liver
TGFB1	10804-H08H	Human	HEK293 Cells	Brain, liver
	80116-RNAH	Mouse, Rat	HEK293 Cells	
	10804-H08H1	Human	HEK293 Cells	
	50698-M08H	Mouse	HEK293 Cells	
	10804-H08H-B	Human	HEK293 Cells	
	80116-R08H	Rat	HEK293 Cells	
VEGFA	11066-HNAB	Human, Cynomolgus	Baculovirus-Insect Cells	Blood vessel
	11066-H27H-B	Human, Cynomolgus	HEK293 Cells	
	10008-HNAH	Human	HEK293 Cells	
	50159-MNAB	Mouse	Baculovirus-Insect Cells	
	29714-HNAH	Human	HEK293 Cells	
	10009-HNAB	Human	Baculovirus-Insect Cells	
	80006-RNAB	Rat	Baculovirus-Insect Cells	
	63004-ZNAB	Danio rerio (zebrafish)	Baculovirus-Insect Cells	

● Hot-selling Marker Antibodies

Target	Cat#	Ab Type	Application	Organoid Type
Ki67	100130-MM22	Mouse MAb	IHC-P	Heart, blood vessel, retina, brain, intestine, liver cancer, gastric cancer, bladder cancer, nasopharyngeal cancer, breast cancer, colorectal cancer, prostate cancer, ovarian cancer, pancreatic cancer
	100130-MM34		IHC-P, ICC/IF	
	100130-MM21		IHC-P	
	13180-MM01		WB, ICC/IF	
	100130-MM01T		ICC/IF	
E-cadherin	10204-MM04	Mouse MAb	ELISA (Cap), ICC/IF	Heart, prostate, breast, inner ear, blood vessel, liver, lung, intestine, kidney, stomach, gastric cancer, breast cancer, prostate cancer, ovarian cancer
	10204-T58	Rabbit PAb	WB, ELISA, IHC-P, ICC/IF	
	10204-T26	Rabbit PAb	ELISA, IHC-P, ICC/IF	
KRT8	100313-R104	Rabbit MAb	IHC-P	Prostate, breast, lung, bladder cancer, breast cancer, prostate cancer, ovarian cancer
	108772-MM04	Mouse MAb	IHC-P, ICC/IF	
	100312-R176	Rabbit MAb	WB, ICC/IF	
p63	100263-T08	Rabbit PAb	IHC-P	Prostate, breast, lung, bladder cancer, lung cancer, breast cancer, prostate cancer
EpCAM	50591-R002	Rabbit MAb	WB, ELISA, ELISA (Det), IHC-P	Breast, liver, intestine, liver cancer, cholangiocarcinoma, ovarian cancer
	50591-R065		IHC-P	
SOX2	100106-RP02	Rabbit PAb	WB, IHC-P, IP	Inner ear, retina, lung, brain, intestine, stomach
KRT19	100306-T40	Rabbit PAb	WB, IHC-P	Liver, pancreas, liver cancer, cholangiocarcinoma, ovarian cancer, pancreatic cancer
	100307-T44		WB, IHC-P, IP	
KRT14	100129-MM01T	Mouse MAb	IHC-P	Prostate, breast, bladder cancer, breast cancer, prostate cancer
	100129-RP02	Rabbit PAb	WB, IHC-P	
KRT20	201092-T08	Rabbit PAb	IHC-P	Intestine, gastric cancer, bladder cancer, colorectal cancer, ovarian cancer
N-Cadherin	11039-R017	Rabbit MAb	ELISA, ICC/IF	Heart, brain, kidney, cholangiocarcinoma
KRT5	100313-R104	Rabbit MAb	IHC-P	Prostate, bladder cancer, breast cancer, prostate cancer
	100312-T38	Rabbit PAb	WB, ICC/IF, IP	
Vimentin	100254-R211	Rabbit MAb	IHC-P	Prostate, retina, kidney, prostate cancer
	10028-R090		ELISA, ICC/IF	
PAX8	101554-T08	Rabbit PAb	IHC-P	Inner ear, thyroid, kidney, ovarian cancer
	14505-T24		ELISA, IHC-P	
beta-Catenin	11279-RP02	Rabbit PAb	ELISA, IHC-P	Heart, liver cancer, colorectal cancer

Target	Cat#	Ab Type	Application	Organoid Type
CD31	10148-MM28	Mouse MAb	IHC-P	Heart, blood vessel, kidney
	10148-R078	Rabbit MAb	ELISA, IHC-P	
	10148-R007	Rabbit MAb	ICC/IF	
	10148-R311	Rabbit MAb	IHC-P	
	10148-R324	Rabbit MAb	IHC-P	
Chromogranin A	100257-R039	Rabbit MAb	WB, ICC/IF	Prostate, intestine, pancreatic cancer
	100256-R204	Rabbit MAb	IHC-P	
PAX2	101696-T42	Rabbit PAb	WB, IHC-P, ICC/IF	Inner ear, brain, kidney
	101696-T10	Rabbit PAb	IHC-P, ICC/IF	
CD44	12211-MM02	Mouse MAb	FCM, ICC/IF	Bladder cancer, nasopharyngeal cancer, ovarian cancer
	12211-MM01	Mouse MAb	ELISA, ELISA (Cap), IHC-P	
	12211-R001	Rabbit MAb	ICC/IF	
VE-Cadherin	10433-R012	Rabbit MAb	IHC-P	Heart, blood vessel
	10433-R048	Rabbit MAb	ELISA, ELISA (Det), FCM, ICC/IF	
PSA	10771-MM02	Mouse MAb	IHC-P	Prostate, prostate cancer
	10771-R103	Rabbit MAb	IHC-P	
Androgen receptor	100272-MM05	Mouse MAb	ICC/IF	Prostate, prostate cancer
TUBB3	101288-T38	Rabbit PAb	WB, ICC/IF, IP	Inner ear, brain
	207271-T40	Rabbit PAb	WB, IHC-P	
MUC1	12123-R107	Rabbit MAb	IHC-P	Cholangiocarcinoma, pancreatic cancer
	12123-R183	Rabbit MAb	IHC-P	
NCAM	108577-T40	Rabbit PAb	WB, IHC-P	Cholangiocarcinoma, lung cancer
	10673-T54	Rabbit PAb	WB, ELISA, ICC/IF, IP	
	108577-T08	Rabbit PAb	IHC-P	
Synaptophysin	100298-T40	Rabbit PAb	WB, IHC-P	Lung cancer, pancreatic cancer
	100298-T34	Rabbit PAb	WB, ICC/IF	
ER alpha	100386-T08	Rabbit PAb	IHC-P	Breast cancer, ovarian cancer
	103267-T34	Rabbit PAb	WB, ICC/IF	
Her2	10004-MM03	Mouse MAb	FCM, ICC/IF	Breast cancer, ovarian cancer
	10004-R002	Rabbit MAb	ELISA, IHC-P, ICC/IF	
	10004-R002A	Rabbit MAb	ELISA, IHC-P, FCM, ICC/IF	
	10004-R511	Rabbit MAb	ELISA, ELISA (Cap), FCM, ICC/IF	
	10004-MM40	Mouse MAb	IHC-P	



Weekly Schedule



date

Empty rectangular box for scheduling.

Empty rectangular box for scheduling.

Empty rectangular box for scheduling.

Empty rectangular box for scheduling.



Sino Biological US Inc. (U.S.A.)

Address: 1400 Liberty Ridge Drive, Suite 101,
Wayne, PA 19087

Tel: +1-215-583-7898 Fax: +1-267-657-0217

Email: order_us@sinobiologicalus.com

Sino Biological Europe GmbH (Europe)

Düsseldorfer Str. 40, 65760 Eschborn, Germany

Tel: +49(0)6196 9678656

Fax: +49(0)6196 9678657

Email: order_eu@sinobiologicaeu.com

株式会社日本シノバイオロジカル (Japan)

〒2130001 神奈川県川崎市高津区溝口1-19-11 グランデール溝口706

ホームページ: jp.sinobiological.com

お問い合わせ: info@sinobiological.co.jp

ご注文: order@sinobiological.co.jp

受託サービス: cro-service@sinobiological.co.jp

電話番号: 044-400-1330

Sino Biological, Inc. (Global)

Address: Building 9, No.18 Kechuang 10th St, BDA

Beijing, 100176, P.R.China

Tel: +86-400-890-9989

Fax: +86-10-5095-3282

Email: order@sinobiological.com

www.sinobiological.com



Follow us on

