



T cell responses to cholera infection

Ana A. Weil¹, Mohammad Arifuzzaman¹, Taufiqur R. Bhuiyan¹, Jason B. Harris², Azim Hossain¹, Emily A. Kendall¹, Regina C. LaRocque², Aaron Harris¹, Abdullah A. Tarique¹, Fahima Chowdhury¹, Ashrafur I. Khan¹, Kalyan K Banerjee³, Edward T. Ryan², Firdausi Qadri¹, Stephen B. Calderwood²

¹International Centre for Diarrhoeal Disease Research (ICDDR,B), Dhaka, Bangladesh, ²Division of Infectious Diseases, Massachusetts General Hospital, Boston, MA

³Division of Biochemistry, National Institute of Cholera and Enteric Diseases, Kolkata, India. Supported by National Institute of Allergy and Infectious Diseases and the Fogarty International Center.

Background

- Vibrio cholerae* O1 infection causes severe, acute secretory diarrhea. Natural infection gives protection against subsequent disease, and immunity may be generated through an anamnestic B-cell response in the gut-associated lymphoid tissue.
- The vibriocidal antibody is a surrogate marker indicating protection from *V. cholerae*; however, no known threshold level of antibody gives complete protection [1]. Serum anti-cholera toxin subunit B (CTB) IgA antibody levels also confer protective immunity, but levels wane rapidly after infection [2].
- Patients with cholera also develop memory B cell responses to toxin co-regulated pilus subunit A (TcpA) and lipopolysaccharide (LPS), detectable for at least one year after infection [3].
- Animal studies indicate that mucosal immune responses to cholera protein antigens are T cell dependent and mediated by CD4 T-helper cells. In addition, our group has observed a rapid Th-2 response to TcpA and a cholera membrane preparation (MP) following cholera infection [4-7].
- B cell memory responses following cholera waned for the T cell independent antigen LPS, suggesting that memory B-cell responses may be mediated in a T cell dependent manner [3].

Objective: We describe both B and T cell memory responses after natural *V. cholerae* O1 induced severe diarrhea in order to investigate the function of T cell memory in cholera, including a possible role in B-cell responses.

Methods

Antigenic Stimulation

VCC: *V. cholerae* cytotoxin/hemolysin from Niced (Dr. KK Banerjee). While VCC's role in cholera infection is unknown, it can assemble into pore-forming heptameric oligomers and causes immunoglobulin expression and activation in murine B-1a cells. VCC may cause diarrheal disease in infection with non-O1 non-O139 *V. cholerae* lacking CT. The *hly* gene encoding the VCC protein is widespread in strains of *V. cholerae*, suggesting a potential role in environmental survival and pathogenesis [8-13]. We used monomeric VCC at a concentration of 2.5 ng/mL.

MP: Cholera membrane preparation from organisms grown in AKI media. Concentration: 10 ug/mL.

TcpA: Concentration: 5 ug/mL.

***Vibrio cholerae* O1 LPS:** Inaba or Ogawa serotype matched to the case. Concentration: 2.5 ug/mL.

Positive controls Purified Protein Derivative and Phytohemagglutinin. Concentrations: 5 ug/mL and 1 ug/mL. Samples with media only were also included.

Study Design

Informed consent was obtained from 16 patients with culture-confirmed *V. cholerae* infection and severe, acute watery diarrhea. Immune responses were compared to those seen in healthy controls from similar socio-economic backgrounds.

FASCIA (Flow-cytometric Assay of Specific Cell-mediated Immune response in Activated whole blood) [14]

- On days 2, 7 and 30 after case presentation, 50uL of peripheral whole blood was diluted eight times with DMEM media, and stimulated with different antigens. After six day *in vitro* culture at 37° C, supernatant was preserved for cytokine analysis and cells were stained with anti-CD3, -CD4, -CD8 and -CD45RO monoclonal antibodies.

- We performed red cell lysis with ammonium chloride, red cell removal, cell washing and suspension in paraformaldehyde for flow cytometric analysis.

- Patient serum was also assayed for VCC, TcpA, and LPS specific IgA and IgG, and for vibriocidal antibody responses [15].

- Peripheral blood mononuclear cells of 10 different cholera patients were separated by Ficoll technique on day 2 and day 7 after case presentation. After 48 hour *in vitro* culture in RPMI medium without stimulation, culture supernatant was assayed for anti-VCC antibody [16].

References

- Holmgren, J. et al., *Mechanisms of disease and immunity in cholera: a review*. J Infect Dis, 1977. **136** Suppl: p. S105-12. 2. Harris, J.B. et al., *Susceptibility to Vibrio cholerae Infection in a Cohort of Household Contacts of Patients with Cholera in Bangladesh*. PLoS Negl Trop Dis, 2008. **2**(4): p. e221. 3. Harris A.M. et al., *Memory B cell Responses in Cholera*: US-Japan Cooperative Medical Science Program, Cholera and Other Bacterial Enteric Infections 43rd Annual Joint Panel Meeting, November 17-19, 2008. 4. Hirabayashi, Y. et al., *H2-unrestricted adjuvant effect of cholera toxin B subunit on murine antibody responses to influenza virus haemagglutinin*. Immunology, 1991. **72**(3): p. 329-35. 5. Eison, C.O. et al., *in gene control of the murine secretory IgA response to cholera toxin*. Eur J Immunol, 1987. **17**(3): p. 425-8. 6. Holmgren, J. et al., *An oral B subunit-whole cell vaccine against cholera: from concept to successful field trial*. Adv Exp Med Biol, 1987. **216B**: p. 1649-60. 7. Bhuiyan, T.R. et al., *Cholera caused by Vibrio cholerae O1 induces T-cell responses in the circulation*. Infect Immun, 2009. **8**. Mukherjee, G. et al., *Vibrio cholerae hemolysin is apoptogenic to peritoneal B-1a cells but its oligomer shepherd the cells for IgA response*. Mol Immunol, 2008. **45**(1): p. 266-70. 9. Saka, H.A. et al., *Vibrio cholerae cytotoxin is essential for high enterotoxicity and apoptosis induction produced by a cholera toxin gene-negative V. cholerae non-O1, non-O139 strain*. Microb Pathog, 2008. **44**(2): p. 118-28. 10. Yamamoto, K. et al., *Identity of hemolysins produced by Vibrio cholerae non-O1 and V. cholerae O1, biotype El Tor*. Infect Immun, 1986. **51**(3): p. 927-31. 11. Rahman, M.H. et al., *Distribution of genes for virulence and ecological fitness among diverse Vibrio cholerae population in a cholera endemic area: tracking the evolution of pathogenic strains*. DNA Cell Biol, 2008. **27**(7): p. 347-55. 12. Manning, P.A. et al., *Cloning of the structural gene (hly) for the haemolysin of Vibrio cholerae El Tor strain O17*. Gene, 1984. **31**(1-3): p. 225-31. 13. Mukherjee, G. et al., *Oligomerization of Vibrio cholerae hemolysin induces CXCR3 upregulation and activation of B-1a cell*. Cell Mol Immunol, 2008. **5**(3): p. 231-4. 14. Swain, A. et al., *Development and evaluation of a flow-cytometric assay of specific cell-mediated immune response in activated whole blood for the detection of cell-mediated immunity against varicella-zoster virus*. J Immunol Methods, 2003. **277**(1-2): p. 17-25. 15. Qadri, F. et al., *Lipopolysaccharide- and cholera toxin-specific subclass distribution of B-cell responses in cholera*. Clin Diagn Lab Immunol, 1999. **6**(6): p. 812-8. 16. Qadri, F. et al., *Antigen-specific immunoglobulin A antibodies secreted from circulating B cells are an effective marker for recent local immune responses in patients with cholera: comparison to antibody-secreting cell responses and other immunological markers*. Infect Immun, 2003. **71**(8): p. 4808-14.

Results

Table 1 Demographic, serologic and clinical characteristics

Patients	n=16
Sex	Male n=8 Female n=8
Median age	34 years (range 13-50)
Serologic subtype	Ogawa n=11 Inaba n=5
Clinical Characteristics	
IV fluids required (SD)	8.6 Liters (+/-1.6)
Duration of diarrhea	21 hours (+/-3.7)
Duration of hospitalization	31 hours (+/- 3.3)
Healthy Controls (HC)	n=10
Sex	Male n=5 Female n=5
Median age	33 years (range 18-45)

Figure 2 Memory-Effector CD4+/CD45RO+ T cell responses and serum antibody response to VCC

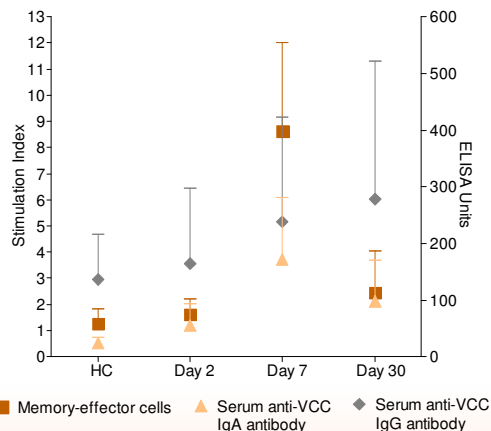


Figure 1 Memory-Effector CD4+/CD45RO+ T cell response to cholera antigens and controls

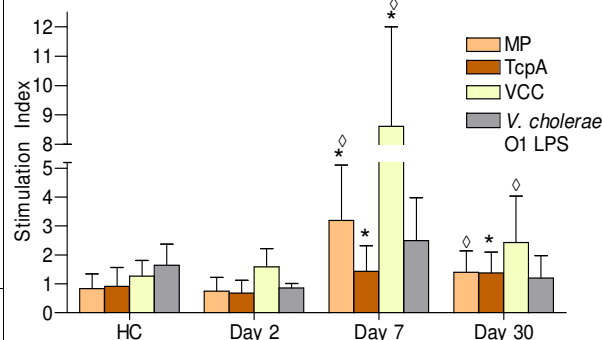


Figure 1: Stimulation Index: Lymphoblast count with antigen stimulation divided by blast count without stimulation (SI = 1 indicates stimulation is equal in samples with and without stimulation). Geometric means with 95% confidence intervals are shown.

* $p < 0.05$ between day 7 or 30 and day 2, using Wilcoxon matched pairs testing.
 $\diamond p < 0.05$ between day 7 or 30 and HC by Mann-Whitney U unpaired testing.

The memory-effector CD4/CD45RO+ population after stimulation is 80% CD45RA-/CCR7-, consistent with an effector phenotype derived from memory T cells.

LPS and TcpA specific antibody responses are similar to our previously reported results [3].

Figure 2: All day 7 and day 30 values are $p < 0.05$ for comparisons with day 2 except memory-effector cells on day 30 using matched pairs testing. All day 7 and day 30 values are $p < 0.05$ for comparisons with HC except anti-VCC IgG levels on day 30 using unmatched pairs testing.

Figure 3 VCC antibody response in lymphocyte supernatant

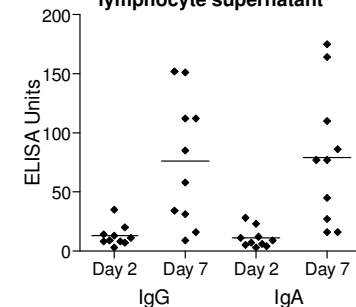


Figure 3: Comparisons between day 2 and day 7 $p < 0.01$ for IgA and $p = 0.01$ for IgG, using matched pairs testing.

Summary and Conclusions

- On day 7 after infection, the T cell memory-effector responses to VCC and MP peaked, and decreased by day 30. Proliferation in response to TcpA increased by day 7 and remained elevated until day 30.

- VCC-specific IgA responses in plasma peaked on day 7 of infection, while VCC-specific IgG responses peaked on day 30. LPS- and TcpA-specific IgA and IgG responses peaked on day 7 and TcpA responses remained elevated until day 30.

- VCC stimulation generated a significant B cell antibody response and more lymphoblast proliferation than observed in response to other *V. cholerae* antigens. The cytolytic activity of VCC may generate epithelial destruction that allows other cholera antigens to penetrate the mucosa and promote the inflammatory response observed in cholera infection.

- Our results demonstrate that patients with cholera develop a memory-effector T cell response to cholera antigens by day 7 following infection, in addition to a memory B cell response. B cell responses occur during and after T cell population expansion, suggesting that T cells may play an important role in the activation, development, and maintenance of the B cell response.

Acknowledgements

We are grateful for the patients who participated in this study. We also thank the field and laboratory staff of the Protective Immunity to Cholera infection study at the ICDDR,B. Funding sources ICDDR,B: Centre for Health and Population Research and the following grants: U01 AI058935 (S.B.C.); RC3 AI053079 (F.O.); R01 AI04725 (E.T.R.); International Research Scientist Development Award K01 TW07144 (R.C.L.); Pediatric Scientist Development Program K12 HD00850 (J.B.H.); International Research Scientist Development Award K01 TW07409 (J.B.H.), and Fogarty International Clinical Research Scholars Program D43 TW05572 (A.A.W., A.H., E.A.K., F.C.).



For additional information please contact:
 Jason B. Harris, MD, Division of Infectious Disease, Massachusetts General Hospital, jbharris@partners.org, or Ana Weil, Tufts University School of Medicine, MD candidate 2010, ana.weil@tufts.edu.

