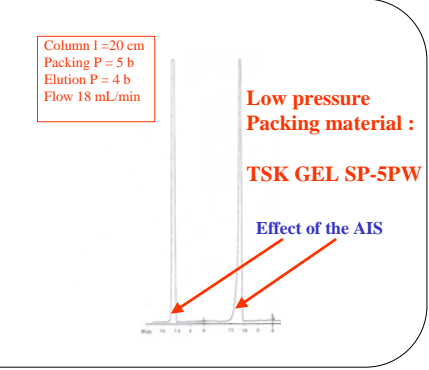
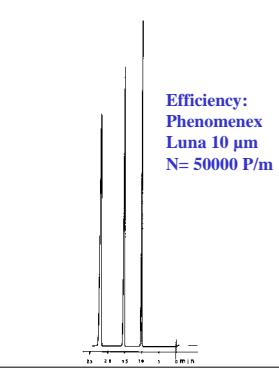
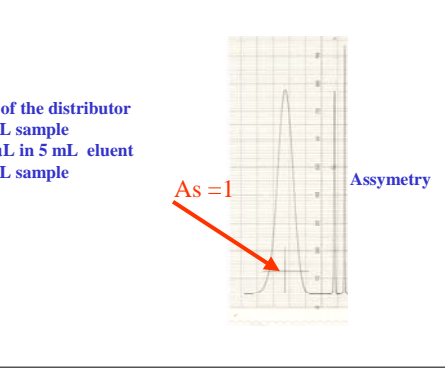
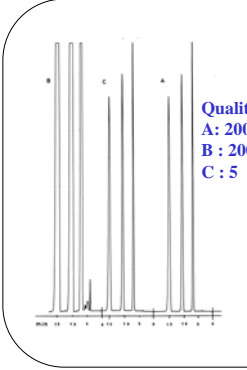
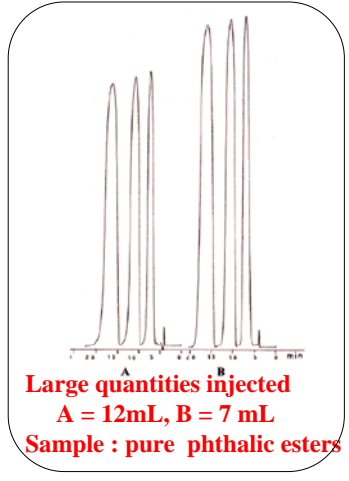
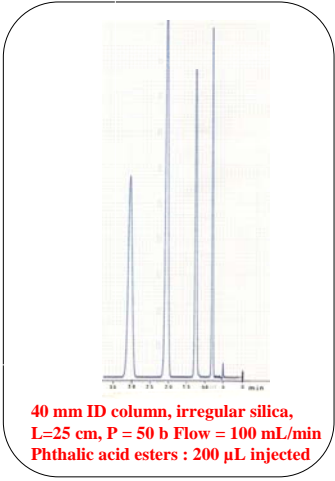
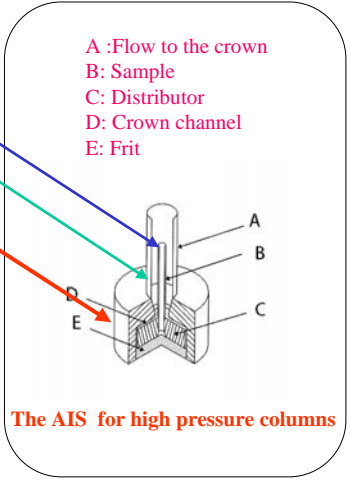
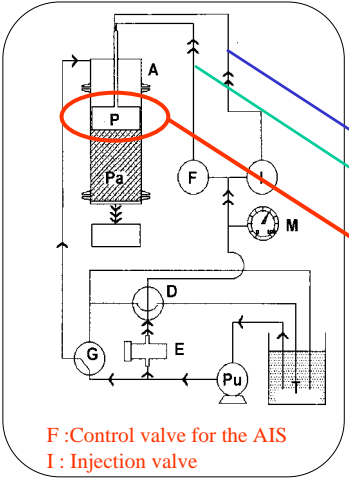
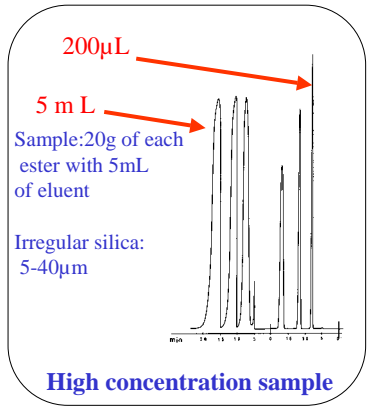
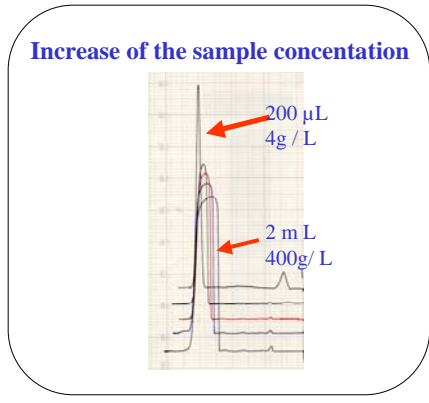
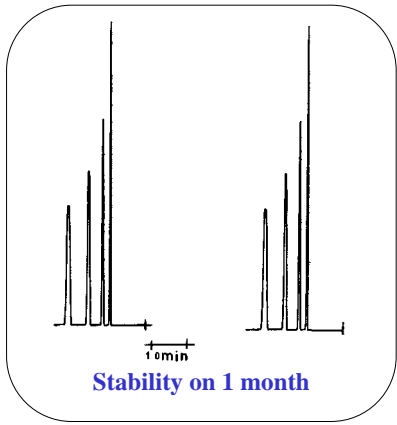


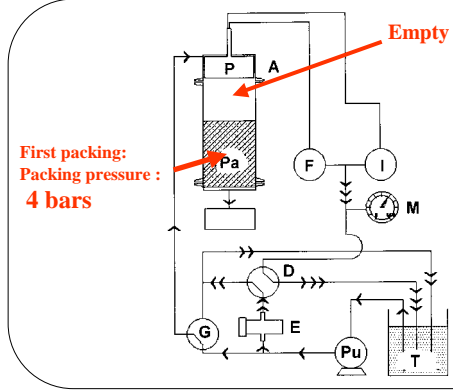
THE AIS ON LARGE DIAMETER, HIGH PRESSURE COLUMNS



LARGE POSSIBILITIES OF APPLICATIONS

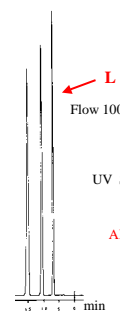


THE DOUBLE PACKING TECHNIQUE



After the first packing, the piston is pull out and in the empty volume, an additional load of slurry is poured which increase the bed length after final compression

SIMPLE PACKING



DOUBLE PACKING

